



MATRIARCH CLINICAL
TECHNOLOGIES

**MATRIARCH
CLINICAL
TECHNOLOGIES**



**CATALOGUE
2025**

ABOUT MATRIARCH CLINICAL TECHNOLOGIES (Pty) Ltd

1 Our Advantage:

Cost effective

From factory to customer,
at factory price

Customization

Offer free
customization, without
large MOQ.

Fast after sales

Rapid solutions
with long term
warranty

Various choices

Different models
Various specs

Professional sales

Professional sales/consultant,
provide best solution for the
clinics/hospitals.

CONTENT



ULTRASOUND 01-09
Black and White, Color Dopler, Wireless Probe, Printer,
Thermal Paper



OPERATION ROOM 10-39
Patient Monitor, ECG, EKG/EMG, Syringe Pump, Vein Finder,
AED, Infusion Pump, Eletrosurgical Unit, Ventilator,
Anesthesia, Endoscope



RADIOLOGY DEPARTMENT 40-47
Portable X ray, Mobile, Stationary, DR, Flat Panel, Printer,
Dental Xray, Apron, Dry Film



FURNITURE 48-63
Surgical Lamp, Examination Light, Hospital Bed, Delivery
Bed, Operation table, Strecher, Stainless Steel, Ward
Accessories, Chairs



OB / GYN 64-69
CTG, Incubator, Radiant Warmer, Juandice Meter,
Colposcope



LABORATORY 70-82
Water Bath, Autoclave, Sterilizer, Microscope, Refrigerator
& Freezer, Mixer/Shaker/Rotater/Stirrer, Centrifuge,
Chemistry Analyzer, Spectrophotometer,



RESPIRATORY 83-87
Oxygen Concentrator, Sunction Machine, CPAP, Bubble
CPAP, Flow Meter



HEMOCARE DEVICE 88-93
BP, Nebulizer, Oximeter, Brest Pump, Thermometer,
Glocometer, Weighing Scale, Fetal Doppler



ENT / OPHTHALMOLOGY 94-98
Otoscope, Audiometer, Laryngoscope, Examination Set



CONSUMABLES 99-106
Tubem Needle, Bandage, Gauze, Tape, Gowns, Gloves,

Ultrasound Scanner

US-B20A

5.5 inch TFT color LCD
Lithium battery≥3Hours
Weight: 700g
Display modes: B, B/B, 4B, B+M, M
Gray scale: 256 levels
Cine loop: ≥400 frames
OB measurements: BPD, GS, CRL, HC, AC, EDD, GA, FW



Ultrasound Scanner

US-B300

12.1 LED
Display modes: B, B/B, 4B, B+M, M
Dynamic range: 0~120dB adjustable
Gain control: 8 segments TGC and overall gain can be adjusted respectively
Permanent storage: 128 images
External LED display have 16 kinds of pseudo color



LED Portable B/W Ultrasound

US-B218

10 inch LED displayer
Display mode: B, B/B, B+M, M, 4B
5 levels of frequency conversion
8-segments TGC control
Cine loop: 256 frames
PAL video output, SVGA video output.



Full Digital Ultrasound Scanner

US-B660

Image storage 64 frames, display depth ≥ 160 .
Scanning model electronic linear array, electronic convex array.
LCD size 9.7 inch/ 12inch, gray scale 256 Levels.
Image flip up/ down, left/ right, black/ white.
Image processing image smoothing/ sharpening, tissue harmonic, histogram, DR, gamma correction, pseudo-color.
Measurement freehand, ellips, distance for perimeter, area volume, heart, G.A, EDD, BPD-FW, FL, AC, HC, CRL, AD, GS, LMP.
Character display date, clock, name, PID, age, sex, hospital name, doctor



Notebook B/W Ultrasound

US-B30

10 inch LED displayer
AC and DC power supply mode, with power adapter.
With high-capacity lithium battery.
8-segment TGC control, overall GAIN control.
Permanent storage: ≥ 128 images
Cine storage: ≥ 256 Frames



Notebook B/W Ultrasound

US-B30A

Built in lithium battery, 3 working hours.
2 probe connectors.
12 inch high resolution color LED displayer.
AC and DC power supply mode.
Permanent storage: 128 images
Cine storage: ≥ 256 Frames
Dynamic range: 0~120dB adjustable



Notebook B/W Ultrasound

US-B30B

Built in battery, 3 working hours.
12 inch high resolution color LED displayer.
AC and DC power supply mode, with power adapter.
2 probe connectors.
New design key board.
High mobility, with aluminium case (optional).



Full Digital Ultrasonic

US-BW580

12.1 inch HD LCD display.
Rechargeable battery.
THI and histogram function.
Support OB report.
Support: Chinese/English/Spanish/French/Portuguese/Russian.
Image storage: 4920 images
Pseudo color: 0-7



Laptop BW Ultrasound with PW Function

US-BP20

PW function, windows 7 based.
B, BB, 4B, BM, PW mode.
THI imaging.
Editable imaging report.
IMT automatic measure function.
High end BW ultrasound, with latest sysyte.
Application mode OB, GYN, Superficial organ, Urology, Pediatric, Cardiac etc



Arm Based System

US-B30D

Adopt the latest ARM system architecture, with more stable performance, clearer image and more powerful function.
Unique USB report function, easy to connect to the computer, simple operation, but also can print PDF, transmission of measurement data
Longer battery life and a maximum standby time of 4 hours.
Storage space can be transformed by up to 256G.



Laptop B/W Ultrasound Scanner US-B70A

Built in battery, 3 working hours.
Display mode B;B/B;4B;B +M;M
Display size 12.1inch LED displayer
Dynamic range 0~120db adjustable
Focus position Dynamic electron focusing
Permanent storage: 128 images



Full-digital Laptop Ultrasound Scanner US-BP30

Window 7 operation system.
15 inch LCD screen, 2 Probe connectors
Display modes: B, B/B, 4B, B+M, PW
THI imaging technology
Dynamic range: 80~280dB adjustable
Pseudo-color processing: 15 pseudo-color coding options
Gray level: 256



Full-digital Laptop Ultrasound Scanner US-CP01

15 inches LCD display zone for large image size, with high quality.
Probe interface: dual probe interface, with automatic identification function
ARM platform, fast computing, HD imaging.
Battery capacity: independent battery compartment /removable lithium battery /6000 mAh
Four encoders, knob design, quick and convenient operation.
Support multi-language switching.
Movie playback: 256 frames, can be played back frame by frame and pause playback, pause playback can be used for image preservation and measurement.
Measurement: professional measurement software.
Host size: 360mm(L)*355mm(W)*65mm(H)



High-level B/W Ultrasound Scanner US-BW360

12.1inch LED display.
Built-in rechargeable battery.
Rich clinical measurement software.
Stable operation platform.
Single probe connector, can work with probe extender.
Element: 128
Report: Abdomen, OB, Cardiac, Urology.
Offer suitcase for package.



Full-digital Ultrasonic Equipment US-B1100

15 inch high resolution LED.
Display mode: B, B/B, B+M, 4B and M
Zoom: ×0.8, ×1.0, ×1.2, ×1.5, ×1.8, 2.0
Focusing: Four sections of dynamic electronic focusing may be elected.
Pre-processes: changeable aperture, dynamic changes of the marks, dynamic filter and edge enhancement, etc.
Pro-processes: 8 gamma correction, 7 false color process, line correlation, frame correlation and linear interpolation, etc



Color Doppler

US-D20

12.1" LCD Displayer, Laptop thin and light design.
 Windows 7 operation system.
 Display modes: B、B/B、4B、B+M、CFM、B+CFM、PDI、B+PDI、PW.
 Gray scale: 256 levels
 80 array element, THI imaging technology.
 3200mAh recharge lithium battery.
 Dynamic range: 80~280dB adjustable.



Laptop Color Doppler

US-D30

80 array element.
 15 inches medical class screen.
 Support Multi Probe, 6 Kinds Language
 Double Connector with battery, 3200mAh recharge lithium battery.
 Optional 3D Software imaging.
 M mode ,B mode, CFM, PDI, PW.
 Scanning depth: 2-280mm
 Operating frequency range: 2.0-12.0MHz



Laptop Color Doppler

US-D80

15" tilt-and-swivel HD LED monitor.
 Scanning mode: Convex, Trans-vaginal, high-frequency linear array,
 Micro-convex, Phased array, 4D array.
 Modes: B、B/B、B/M、CFM、CFM/B、PDI、PDI/B、PW.CW.
 B/D dual-purpose: linear array, B/PWD: convex array, B/PWD.
 B/D/PW real-time Triple
 Support the six languages.
 Gray scale: 256 levels.



Color Doppler

US-D60

32 channels,80 elements
 15" LCD Displayer, with 2 probe connectors
 Display modes: B、B/B、4B、B+M、CFM、B+CFM、PDI、B+PDI、PW;
 Scanning mode: Convex,Trans-vaginal, high-frequency linear array, Micro-convex;4D array.
 Depth display: ≥250mm;
 Dynamic range: 0~120dB adjustable.



Portable Color Doppler

US-D90

80 array element
 12 inches medical class screen
 Support Multi Probe, 6 Kinds Language
 Double Connector with battery
 5 levels Image optimization
 Digital beam-forming, Un View- speckle reduction
 Tissue harmonic
 Imaging Modes: B、B&M、2B、4B、THI、PW、PDI、Color (3D Optional)



Laptop Color Doppler US-C90

ARM system. Editable report pages.
Display size 12.1inch LED displayer.
Display mode B/B;4B;B +M;M
Annotation function:128 kinds of body position markers, full-screen text and arrow annotations and other annotation functions
Storage space: 32GB-128GB



Trolley Color Doppler US-D2000

15" LCD Displayer
Windows 7 operation system
Scanning mode: electron convex array, high frequency linear array, cavity, micro convex, rectum
Display modes: B / B/B / 4B / B+M / CFM / B+CFM / PDI / B+PDI / PW



Trolley Color Doppler US-NOVA

21.5-inch HD display
12.1" touch screen
Color flow diagram
Power Doppler imaging
Pulse wave doppler
Continuous wave doppler
THI reverse tissue harmonic imaging
3D reconstruction mode (optional real-time 4D)
VGA, audio, DVD drive, 4 USB, DICOM3.0



Trolley Color Doppler US-D7800

15" LED Player.(large screen optional)
Support Multi Probe
6 Kinds Language
4 Active Probe Connector
Optional 3D Software imaging
Optional Real-time 4D imaging



Smart Ultrasound

US-UP20

Scanning mode: electronic convex array
Operating system: Windows/Android
Language: English/Chinese/French/Arabic/Spanish
Display mode: B, B/B, B/M, 4B, M
Gray scale: 256, Cine loop: max 512 frames, TGC: 8 TGC adjustable
Central frequency: 3.5MHz(2.5-4.5MHz), Scanning depth: max 240mm
Colors: 9, Body mark: 140



Smart Ultrasound

US-UP20L

Operating system: Windows/Android
Language: English/Chinese/French/Arabic/Spanish
Display mode: B, B/B, B/M, 4B, M
Gray scale: 256, Cine loop: max 512 frames
TGC: 8 TGC adjustable, Central frequency: 7.5MHz(5-10MHz)
Element: 80, Scanning depth: max 120mm
Colors: 9, Body mark: 140



Wireless Probe Ultrasound Scanner

US-UP3C

Scan mode: electronic array, electronic convex array scanning
Frequency: convex probe 3.2/5.0MHz
Elements: 80 elements, Field of view: convex R60
Scanning depth: convex 90-200mm, adjustable
Screen: smart phone or tablet screen
Supporting system: IOS, Android, Windows
Display mode: B, B/M, Image gray scale: 256 level



Wireless Probe Type Ultrasound Scanner

US-UP3L

Scan mode: electronic array, electronic linear array scanning
Frequency: linear probe 7.5/10MHz
Scanning depth: linear 40-100mm, adjustable
Field of view: linear L40, Elements: 80 elements
Screen: smart phone or tablet screen, Supporting system: IOS, Android, Windows
Display mode: B, B/M, Image gray scale: 256 level



Wireless Probe Type Ultrasound Scanner

US-R01

Battery: 7.4V, 900mAh
Performance: ~3.5h
Weight: 140g
Element: 80 elements
Frequency Range: 2.9-5.0 (MHz)
Parameter: 60°
Depth: 220 (mm)
Exam Type: Abdominal, Ob / Gyn, Urology



Wireless Probe Type Ultrasound Scanner

US-R02

Battery: 7.4V, 900mAh
Element : 80 elements
Frequency Range: 5-10MHz
Parameter: 40mm
Depth: 100mm
ExamType: Blood vessels, musculoskeletal, nerves, small organs



Wireless Probe Type Ultrasound Scanner Doppler

US-DP7

Convex: 3.5MHz, Frequency Range: 2.9-5.0, parameter: 60°,
Depth: 220mm
linear: 8.0MHz, Frequency Range: 6.67-10.0, parameter: 40mm, Depth:
100mm
Software: Puncture line, median line, obstetric
Measurement, workstation, Puncture line, median line, obstetric,obstetric
measurement,



Wireless Probe Ultrasound Scanner

US-C5LC

Elements: 128
Scan mode: electronic array scanning
Frequency: convex probe 3.5/5MHz, linear probe 7.5/10MHz
Scanning depth: convex 90-305mm, linear 20-80mm, adjustable
Scanning depth: convex 90-305mm, linear 20-80mm, adjustable
Display mode: B, B/M, Color, PDI, PW
Image gray scale: 256 level
Power:By built-in lithium battery, 2800mAh, Battery working time: 3 hours



Wireless Probe Type Ultrasound Scanner

US-5P

Elements: 128 elements
Scan mode: electronic array,electronic linear array scanning;
Frequency: linear probe 10/14MHz
Scanning depth: linear 20/30/40/55mm, adjustable
Screen:smart phone or tablet screen
Supporting system: IOS, Android, Windows
Display mode: B, B/M
Image gray scale:256 level, Frame rate: 16f/s



Wireless Probe Type Ultrasound Scanner

US-C5L

Elements: 128 elements
Scanning depth: linear 20-90mm,adjustable, Field of view:linear L40
Scan mode: electronic array,electronic linear array scanning;
Frequency: linear probe 7.5MHz
Screen:smart phone or tablet screen
Supporting system: IOS, Android, Windows
Display mode: B, B/M, Color, PDI, PW



Wireless Probe Type Ultrasound Scanner
US-C5C

Scan mode: electronic array, electronic convex array scanning;
 Frequency: convex probe 3.5MHz
 Scanning depth: convex 100-305mm, adjustable
 Elements: 128 elements, Field of view: convex R60
 Supporting system: IOS, Android, Windows, Display mode: B, B/M, Color, PDI, PW
 Frame rate: 18f/s, Image gray scale: 256 level
 Image video storage: store on mobile phones, tablet PC



Wireless Probe Type Ultrasound Scanner
US-C5TC

Probe Type: consist by two of convex, transvaginal
 Scanning mode: electronic array
 Display mode: B, B/M, color doppler version with B+Color, B+PDI, B+PW
 Probe element: 128
 Channel of RF circuit board: 32
 Probe frequency and scan depth, head radius/width, scan angle(convex): Convex head 3.5MHz/5MHz, 90/160/220/305mm, 60mm, 60° Transvaginal head 6.5MHz/8MHz, 40/60/80/100mm, 13mm, 149°



Vascular Doppler Detector
VD-520

Doppler detector: send ultrasonic waves to the human body through the detected part of the probe, detect different blood flow velocities and obtain the information of blood flow in vascular vessels.
 Data interface: it can be connected to the computer, equipped with vascular analysis and diagnosis software and data transmission cable and can upload the waveform and data stored by the host to the computer.
 Flexible probe button: freeze waveform.
 Detection and storage: automatically adjust the baseline and store 50 groups of waveform data



Sony Thermal Printer UPX-898MD

Designed to be integrated into both analog and digital medical imaging environments
 Capable of delivering high-quality black & white prints in less than two seconds
 It offers several operational and ergonomic enhancements while retaining the same space-saving footprint and easy integration into medical carts



Thermal Paper 110S

10 rolls/box,
 100 rolls/carton
 110mm*20m



Thermal Paper 110HG

10 rolls/box,
 100 rolls/carton
 110mm*20m



Ultrasound Trolley US-T01

ABS, robust quality
 3 layer with handle
 4 wheels
 3 probe holders



Ultrasound Trolley US-T02

- Metal type
- 4 probe holders
- Large size table
 With a basket



Biopsy Needle Guide US-NG1

100% customization
 Medical class metal
 Robust quality



Biopsy Needle Guide US-NG2

100% customization
 Medical class metal
 Robust quality



Biopsy Needle Guide US-NG3

- 100% customization
- Medical class metal
- Robust quality



Ultrasound Probe Cover US-R1

Length: 185mm
 Width 52mm
 Thickness 0.06mm
 144 pcs/box
 Made of natural latex,safe
 use ofultrasound probes



Multi-parameter Monitor

PM-12B

12.1 inch high resolution color TFT display.
 USB interfaces support easy software upgrade and data transfer.
 Compatible with central monitoring system (CMS).
 Simple and friendly operating display interface.
 Multi-display modes suitable for different applications.
 Standard interface, large font, ECG standard full display, OXY, trend table, BP trend.
 Built-in high capacity battery up to 3 hours of continuous work.
 VGA output for external display.



Multi-parameter Monitor

PM-12F

Unique accessory management cabinet.
 12.1 inch high resolution color TFT display.
 USB interfaces support easy software upgrade and data transfer.
 Three working modes: monitoring, surgery and diagnosis.
 Simple and friendly operating display interface.
 Multi-display modes suitable for different applications.
 Standard interface, large font, ECG standard full display, OXY, trend table, BP trend.
 Built-in high capacity battery up to 3 hours of continuous work.
 VGA output for external display.



Multi-parameter Patient Monitor

PM-12A

Separated para board: ECG, NIBP, SpO2 board
 Full touch-screen enables intuitive operation by clicking one the specific parameters or the waveform in real time, standard configuration includes the navigation knob
 Real time S-T segment analysis, and ARR analysis; SpO2 pitch tone variation and drug dose calculation
 Parameter waveform and characters color selectable
 Multi-display: standard, large font, trend coaxis, oxy CRG dynamic
 Standby mode for energy saving and suspend monitoring
 7-lead ECG waveforms display in phase
 Capture dynamic waveforms



Patient Monitor

PM-12C

12.1" TFT LCD, suitable for bedside .
 Support various modules including 3/5/12 leads
 ECG, RESP, SPO2, NIBP, IBP, CO2, AG etc.
 Multi-display: large font, standard, full-ledas, trend, oxy CRG 720h
 monitoring data storage.
 Built-in detachable rechargeable lithium battery (about 4h).
 Support multi-language, central monitoring system.



Multi-parameter Patient Monitor

PM-8000C

Application Range: Adult/Pediatric/Neonatal/Medicine/Surgery/
 Operating Room/ICU/CCU
 Display: 12.1" real color TFT screen



Multi-parameter Patient Monitor

PM-8000D

12.1"real color TFT screen
 CE,ISO13485
 SFDA: class II b
 Anti-electroshock degree
 TEMP/SpO₂/NIBP: BF ECG/Resp: CF
 Adult/Pediatric/Neonatal/Medicine/Surgery/
 Operating room/ICU/CCU



Multi-parameter Patient Monitor -ICU

PM-2000D

12"high resolution color TFT LCD display
 13 types arrhythmic analysis, multi-lead ECG waveforms display in phase,
 15 types drug calculation and titration table.
 Anti-ESU, anti-defibrillator; RA-LL impedance.
 SPO₂ can testing for 0.1% weak,high accuracy.
 Unique breathing measurement technology, real-time monitoring, intelligent
 filter design, eliminate interference, measuring respiratory accurately.
 Trend coexist interface for all parameter to observe easily.
 OxyCRG dynamic view display, more intuitive with all parameters.



Multi-para Patient Monitor

PM-2000B

8inch high resolution color TFT LCD display.
 6 standard parameters: ECG, RR, NIBP, SPO₂, Pulse Rate and Temperature.
 13 Type Arrhythmic Analysis, Multi-Lead ECG Waveforms Display in Phase,
 Real time S_T segment analysis, pacemaker detection
 Drug calculation and titration table
 Efficient resistance to interference of defibrillator and electrosurgical cautery
 SPO₂ can testing for 0.1% Weak
 RA-LL impedance Respiration
 Options: EtCO₂, touch Screen
 2-5 hours working capacity of built in rechargeable battery
 Large volume of tabular and graphic trends information storage and easy to recall.Anti-
 ESU, anti- defibrillator



Multi-para Patient Monitor

PM-2000A

Touch screen, 5.0 inch color TFT-LCD, simple for operating,
 quickly&accurately measure the data.
 Build-in rechargeable Li-battery, up to 15 hours running time, support AC and
 DC power.
 Adjustable audible and visual alarms, and sensor off alarm.
 Long time monitoring and sleeping monitoring.
 Easy to carry, suitable for ambulance center, has the stand for fixing.
 ET/CO₂, FiCO₂ and RR are optional.



Patient Monitor

PM-8000S

8-color TFT display.
 Unique human voice alarm.
 Maximum 720 hour graphic and tabular trends.
 Maximum 12 hours of all wave forms.
 Optional:recorder,dual IBP,CO₂.



Vital Signs Monitor

VT-03

PM80B: 8 inch TFT display Simple and convenient operation, which is applicable for community medical treatment and family use. Adjustable audible and visual alarms

Standard Parameters: NIBP, SpO2, PR



Patient Monitor

PM-9000C

12.1" color TFT display.
ECG full lead.
Unique human voice alarm.
Maximum 720 hour graphic and tabular trends.
Maximum 12 hours of all waveforms.
Nurse call, analog output.
Optional: recorder, dual IBP, CO2, GAS.



Multi-parameter Patient Monitor

PM-8000D PRO

Anti-electroshock degree: Class I equipment
(internal power supply)
TEMP/SpO2 /NIBP: BF ECG/Resp: CF
14.0 inch TFT LCD screen Resolution: 1366*768
Adult/Pediatric/Neonatal/Medicine/Surgery/
Operating Room/ICU/CCU



Plug-in Type Patient Monitor-ICU

PM-E12

5 Leads: RA, LA, LL, RL, V
Lead mode: I, II, III, aVR, aVL, aVF, V
Increase: $\times 250$, $\times 500$, $\times 1000$, $\times 2000$
Sensitivity: $> 200 \mu\text{V}$ (Peak-to-peak value)
Input impedance: $> 5 \text{ (megohm)}$
Bandwidth: Surgery 1~20 Hz
Monitor 0.5 ~ 40 Hz
Diagnostic 0.05~130 Hz
CMRR: $\geq 100 \text{ dB}$
Polarization Voltage: $\pm 300 \text{ mV}$
Baseline Recovering Time: After defibrillation $< 3 \text{ seconds}$
Signal Range: 8 mV (Peak-to-peak value)
Calibrating Signal: 1mV, precision $\pm 5\%$



Multi-parameter Patient Monitor

PM-2000D

12" high resolution color TFT LCD display
Standard parameters: ECG, RESP, NIBP, SPO2, PR/HR, TEMP.
13 types Arrhythmic Analysis, Multi-lead ECG waveforms display in Phase, 15 types Drug calculation and titration table.
Anti-ESU, anti-defibrillator; RA-LL impedance.
SPO2 can testing for 0.1% weak, high accuracy.
Unique breathing measurement technology, real-time monitoring, intelligent filter design, eliminate interference, measuring respiratory accurately.
Trend Coexist interface for all parameter to observe easily.
OxyCRG Dynamic View display, More intuitive with all parameters.
Platform scalable with cable or wireless connecting to central monitoring.
Printer /Recorder is optional for real-time printing.



Multi-parameter Patient Monitor-ICU

PM-N6

- 12.1" color TFT LCD screen(touch screen optional)
- 8 waveform display, up to 12-lead ECG analysis
- Powerful calculation: (Hemodynamic, Dose, Oxygenation, Ventilation)
- Pacemaker detection
- ST & arrhythmia analysis (17 types)
- SpO2 support PI, low perfusion 0.2%
- Night mode, standby mode, venipuncture mode



Trolley PMT-01



Trolley PMT-02



3 Channel ECG Machine

ECG-301

7" color touch screen.

Simultaneously acquisition of 12 lead, full screen display of 12 channel ECG waveforms.

Thermal printer with 80mm print paper, synchronization print.

Historical data and patient's information can be reviewed and printed.

Support USB flash disk & SD memory, stored reports can be saved, opened, analyzed in PC via ECG playback.

The machine can store over 400 ECG reports in its built-in flash.

Adapt to 100-240V, 50/60Hz AC power supply.



3 Channel ECG Machine

ECG-302

5.6" color touch screen, both push-button and touch operation. 4.3" color touch screen can be choose.

Simultaneously acquisition of 12 lead, full screen display of 12 channel ECG waveforms.

Thermal printer with 80mm print paper, synchronization print.

Support USB flash disk & SD memory, stored reports can be saved, opened, analyzed in PC via ECG playback software.

The machine can store over 400 ECG reports in its built-in flash.

Adapt to 100-240V, 50/60Hz AC power supply



3 Channel ECG Machine

ECG-303

4.3"or 5.7" high-resolution color screen, Chinese/English language support, colored waveform display.

Simultaneously 12 Leads Acquisition.

Record paper: 80mmX20m stock form or fanfold.

Operation mode: auto or manual mode.

High Resolution Thermal Printer, Chinese/English display and print.

Capability of patients information: more than 100 patients records.



3 Channel ECG Machine

ECG-304

7" high resolution color touch screen.

12-lead simultaneous acquisition and display.

ECG Automatic measurement and interpretation function.

Complete digital filters, resisting baseline drift, AC and EMG interference.

Compact and lightweight design.

Support USB flash disk and micro SD card to extend memory.

Software upgrade via USB/SD card.

Built-in rechargeable Li-ion battery.

Paper specification: Roll 80mmx20m.



3 Channel ECG Machine

ECG-305

5" high resolution TFT LCD screen

Peripheral ports: USB and LAN

Shortcut keys to simplify the doctor's operation

Built-in rechargeable lithium battery for

Up to 3 hours of continuous work

Massive local storage capacity up to 3000 files

Recording paper 80 mm, roll paper



3 Channel ECG Machine

ECG-306

Simultaneously acquisition of 12 lead, full screen display of 12 channel ECG waveforms.
7" color screen, both push-button and touch operation(optional).
Sensitive filters of ADS, HUM, and EMG. Automatic measurement, calculation, analysis, waveform freezing.
Auto-analyze and auto-diagnostic can reduce doctor's burden and improve working efficiency.
Automatic adjustment of baseline for optimal recording.
Thermal printer with 80mm print paper, synchronization print.



3 Channel ECG Machine

ECG-3303W

5" color LCD
80mm , 3 channel format recording , excellent automatic interpretation.
250 patient cases storage (SD card storage is optional)
Working modes: Manual , Automatic , R-R , Store.
Detailed patient information record.
Adapt to 110-230V, 50/60Hz power supply. Built-in rechargeable Li-ion battery supports continuously working for about 9 hours.
USB / UART communication ports support USB storage , laser printer printing and PC ECG software (Optional) .
Recording paper :80mmx20m roll paper



3 Channel ECG Machine

ECG-3303G

5" color LCD
80mm , 3 channel format recording , excellent automatic interpretation.
250 patient cases storage (SD card storage is optional) .
Working modes: Manual, Automatic, R-R, Store.
Detailed patient information record.
Adapt to 110-230V, 50/60Hz power supply. Built-in rechargeable Li-ion battery supports continuously working for about 9 hours.
USB / UART communication ports support USB storage, laser printer printing and PC ECG software (Optional) .



3 Channel ECG Machine

ECG-3303B

3.5" color LCD
80mm , 3 channel format recording , excellent automatic interpretation.
250 patient cases storage (SD card storage is optional)
Working modes: Manual, Automatic, R-R, Store.
Detailed patient information record.
Adapt to 110-230V, 50/60Hz power supply. Built-in rechargeable Li-ion battery supports continuously working for about 9 hours.
USB / UART communication ports support USB storage , laser printer printing and PC ECG software (Optional) .
Recording paper : 1roll (80mm x 20m)



6 Channel ECG Machine

ECG601

7" high resolution color touch screen.
 12-lead simultaneous acquisition and display.
 ECG Automatic measurement and interpretation function.
 Complete digital filters, resisting baseline drift, AC and EMG interference.
 Compact and lightweight design.
 Support USB flash disk and micro SD card to extend memory.
 Software upgrade via USB/SD card.
 Built-in rechargeable Li-ion battery.
 Paper specification: Roll 80mmx20M



6 Channel ECG Machine

ECG602

7" color screen, both push-button and touch operation(optional).
 Acquisition Mode: Simultaneously acquisition of 12 lead, full screen display of 12 lead ECG waveforms.
 Paper dimension: 80mm (W) × 20m (L)
 Adapt to 100-240V, 50/60Hz AC power supply.
 The machine can store over 500 ECG reports in its built-in flash.
 USB communication interfaces (optional).



6 Channel ECG Machine

ECG-603

Backlit high resolution 10" touch screen display 12 channel ECG waveform simultaneously. Time, Heart rate. ect support input of patient name, Age, Sex and Hospital name.
 Thermal paper 216mm*20m thermal paper in rolls.
 Patient Cable standard 10 core. 200 reports in built-in memory.
 Report presentation, review and re-printing.
 Built-in rechargeable Li-poly battery with 2 hours continuous printing.



6 Channel ECG Machine

ECG-604

7" color touch screen.
 Simultaneously acquisition of 12 lead, full screen display of 12 channel ECG waveforms.
 Thermal printer with 112mm print paper, synchronization print.
 Historical data and patient's information can be reviewed and printed.
 Support USB flash disk & SD memory, stored reports can be saved, opened, analyzed in PC via ECG playback software.
 The machine can store over 400 ECG reports in its built-in flash.
 Adapt to 100-240V, 50/60Hz AC power supply.



6 Channel ECG Machine

ECG-605

5.6" color touch screen, both push-button and touch operation. 4.3" color touch screen can be choose.
 Simultaneously acquisition of 12 lead, full screen display of 12 channel ECG waveforms.
 Thermal printer with 112mm print paper, synchronization print.
 Historical data and patient's information can be reviewed and printed.
 Support USB flash disk & SD memory, stored reports can be saved, opened, analyzed in PC via ECG playback software.
 The machine can store over 400 ECG reports in its built-in flash.
 Adapt to 100-240V, 50/60Hz AC power supply.



6 Channel ECG Machine

ECG-E6

8" high resolution TFT LCD screen.
 Peripheral ports: USB and LAN.
 Shortcut keys to simplify the doctor's operation.
 Built-in rechargeable lithium battery for up to 3 hours of continuous work.
 Massive local storage capacity up to 3000 files.
 112mm z-fold thermal paper.



6 Channel ECG Machine

ECG-3306G

7" color LCD
 112mm, 6 channel format recording, excellent automatic interpretation.
 250 patient cases storage and replay.
 Working modes: Manual, Automatic, R-R, Store.
 Detailed patient information record.
 Adapt to 110-230V, 50/60Hz power supply. Built-in rechargeable Li-ion battery supports continuously working for about 9 hours.
 USB / UART communication ports support USB storage, laser printer printing and PC ECG software (Optional) .
 Recording Paper: 112mmx27m roll paper



6 Channel ECG Machine

ECG-3306B

7" color LCD
 112mm, 6 channel format recording, excellent automatic interpretation.
 40 patient cases storage and replay.
 Working modes: Manual, Automatic, R-R, Store.
 Detailed patient information record.
 Adapt to 110-230V, 50/60Hz power supply. Built-in rechargeable Li-ion battery supports continuously working for about 9 hours .
 Recording paper: 112mmx27m roll paper



12 Channel ECG Machine

ECG-1200

10.2" color touch-screen, both push-button and touch operation.
 Simultaneously acquisition of 12 lead, full screen display of 12 channel ECG waveforms.
 Thermal printer with 216mm print paper, synchronization print.
 Historical data and patient's information can be reviewed and printed.
 Support USB flash disk & SD memory, stored reports can be saved, opened, analyzed in PC via ECG playback software.
 The machine can store over 500 ECG reports in its built-in flash.
 Adapt to 100-240V, 50/60Hz AC power supply



12 Channel ECG Machine

ECG-1201

7" high resolution color touch screen.
 Full alphanumeric keyboard with shortcut keys, efficient in operation.
 Simultaneous 12 leads ECG acquisition and display.
 Automatic ECG measurements and interpretation.
 Internal storage up to 1000 cases, convenient for case review and statistic.
 Built-in rechargeable lithium high capacity battery.
 ECG data can be transmitted to PC via USB. ECG reports can be saved, opened, in PC via ECG playback software.
 Paper specification: 210mm (W)*30m(L)



12 Channel ECG Machine

ECG-1203

- 7" high resolution TFT LCD screen.
- Peripheral ports: USB and LAN.
- Shortcut keys to simplify the doctor's operation.
- Built-in rechargeable lithium battery for up to 3 hours of continuous work.
- Massive local storage capacity up to 3000 files.
- Upload data to ECG management software via WIFI (optional)
- Icon buttons on the screen for intuitive operation.
- Various report formats for printing.



12 Channel ECG Machine

ECG -1204

- 7" color LCD
- 210mm, 12 channel format recording , excellent automatic interpretation.
- 250 patient cases storage (SD card storage is optional)
- Working modes: Manual, Automatic, R-R, Store.
- Detailed patient information record.
- Adapt to 110-230V, 50/60Hz power supply. Built-in rechargeable Li-ion battery supports continuously working for about 9 hours.
- USB / UART communication ports support USB storage , laser printer printing and PC ECG software (Optional) .
- Recording paper :1roll (210mmx30m)



12 Channel ECG Machine

ECG-1205

- Backlit high resolution 10" touch screen display 12 channel ECG waveform simultaneously, Time, Heart rate.ect support input of patient name, Age, Sex and Hospital name.
- Thermal paper 216mm*20m thermal paper in rolls.
- Patient Cable standard 10 core. 200 reports in built-in memory.
- Report presentation, review and re-printing.
- Built-in rechargeable Li-poly battery with 2 hours continuous printing.



12 Channel ECG Machine

ECG-12A

- 8.9" high resolution TFT LCD screen.
- Peripheral ports: USB and LAN
- Shortcut keys to simplify the doctor's operation.
- Built-in rechargeable lithium battery for up to 3 hours of continuous work.
- Massive local storage capacity up to 3000 files.
- Upload data to ECG management software via WIFI (optional).
- Icon buttons on the screen for intuitive operation.
- Various report formats for printing.



Digital Brain Electric Activity Mapping

KT88-16

16 channels
EEG record, Automatic analysis, Digital filtering, SpO2, ECG measurement, Sync collection.

Method of 10/20 electrodes placement under international standard system, leads can be changed during replaying. Support different types of combined leads during sampling.

Adopt bioelectricity amplifier for distilling brainwave, continuous recording time can be up to 24 hours, integrated full-automatic calibration system.



Digital Brain Electric Activity Mapping

KT88-24

24 channels
EEG record, Automatic analysis, Digital filtering, SpO2, ECG measurement, Sync collection.

Digital Brain Electric Activity Mapping collects EEG signal with electrodes, via integrated amplification, A/D transformation, PC auto-analysis, FFT, to form electroencephalogram that displays with color depth.

The product is applicable for checking such diseases as epilepsy, intracranial inflammation, cerebrovascular diseases and brain tumors.



Digital Brain Electric Activity Mapping

KT88-32

32 channels
EEG record
Automatic analysis
Digital filtering
SpO2
ECG measurement
Sync collection



EMG System

EMG-6600

Professional EMG/EP operation platform and perfect test projects, complete each test in the shortest time.

Perfect case report data and graph creating system.

Special database management system.

Select test part with Neuro and muscle navigation system and projects selecting system fleetly and conveniently.

Powerful normal value system, contrast with normal data automatically.

Flexible software design, configure systems according to requirements.



Dynamic ECG Systems(Hotler)

HT-12

Number of channels: 12 channels;
 Sampling accuracy: 12Bit
 Record time : 24 h
 Power: 2 AA size batteries
 Interface: USB2.0;
 Scale voltage: 1mV+5%; Standard Sensitivity: 10mm/mV+5%;
 Noise level: ≤30uV; CMRR: ≥60dB;
 Low-frequency characteristics: Time constant>3.2s
 Scan speed: 25mm/s+5%



Ambulatory Blood Pressure Monitor

BPM50

Compact and portable, user-friendly interface, easy to use
 Patient range: adult, pediatric, neonate 24 hours ambulatory
 NIBP monitoring function, up to 350 groups of ambulatory
 NIBP data can be recorded for once.
 Perfect combination of automatic and manual measurement method, up to 3000
 groups of data can be recorded for once by manual measure.
 High-definition color TFT display, strong visibility
 By data review interface such as "data list", "trend graph", "big font", NIBP data
 is clear at a glance
 Display of low power prompt, alarm, error message and time Supply two kinds
 of unit: mmHg / kPa



Handheld Pulse Oximeter

H0-100

2.8" high resolution color display, two display directions.
 Turn off automatically for power saving.
 Two types of power supply: AC charge or 4 AA batteries.
 Three measurement modes: spot-check, record and monitoring.
 3-level visual and audio alarms with adjustable alarm ranges.
 Continuous stores data for 999 patient files in 120 hours.
 *Data can be stored on a computer and managed, analyzed and printed by
 using the ODMS system.
 Silent sleep monitoring, with data storage and automatic power-saving features
 for patients with 24 uninterrupted care.
 Suitable for adults, pediatric and neonate patient.



Handheld Pulse Oximeter

H0-200

3.5" Large size color touchscreen, 320X480 pixels.
 Two types of power supply: AC charger or 4400mAh Lithium-Ion Battery.
 Three measurement modes: spot-check, monitoring and record.
 Continuous storage of data for 999 patient data in 120 hours.
 Data can be stored on a computer and managed, analyzed and printed with
 data analysis system.
 Silent sleep monitoring, with data storage and automatic
 power-saving features for patients with 24 uninterrupted care.
 Suitable for adults, pediatric and neonate patients



Vein Finder

VF-B10

Light Type: near-infrared light
 Best projection distance :200± 20mm`
 Dimension: 240×60x60mm(LxWxH)
 Battery: 4 hours
 Working time operating mode :handheld or suspension



Vein Finder

VF-D20

Machine size: 190X24X35MM
 Number of lamp beads: 5W*4
 Wavelength: 650nm
 Power: 20W
 Voltage: 12.6V
 Stand-by power: 50UA
 Built-in lithium battery: 650MA



Vein Finder

VF-100

Light Source: near Infrared
 Projector resolution(pixel): 854*480
 Projection size: large, medium, small, very small
 Projection color: grey white,green,green background, red, blue, blue background
 Projection brightness: 4 levels adjustable
 Projection mode: normal, enhanced,depth
 Depth prompts: deep, medium, shallow
 Resolution speed: 60frames/s
 Resolution deviation: ≤0.10mm



Vein Finder

VF-200

Vein depth by 3D full-color display
 Mode 4*4*3 (color*brightness*size)
 Display: projection + OLED
 Vein depth YES (3D full-color display)
 Host weight (grams): 450
 Light source: near Infrared
 Peak weave length (nm): 940±15nm
 Projection accuracy (mm) ≤0.3mm
 Image resolution (pixel) 640*480
 Projection brightness (lumens) 5-10 lumens
 Best projection distance (cm) 23cm±3cm



Vein Finder

VF-300

Display: projection + OLED
 Host weight (kg): 0.5
 Light source near Infrared
 Peak weave length (nm) 850±15nm
 Projection accuracy (mm) ≤0.3mm
 Image resolution (pixel) 640*480
 Projection brightness (lumens) 5-10 lumens
 Best projection distance (cm) 23cm±3cm
 Mode: 5x4x3 (color*brightness*size)



Vein Finder

VF-D10

Single packing size: 225×110×70mm
 FCL size: 470×3670×585mm
 Packing specification: 50set/box
 FCL weight: 14.5Kg
 Gross weight of machine: 260g
 Net weight of machine: 94g
 Machine size: 190×24×35mm



Vein Finder

VF-500

7 Colors Available: Suitable for different skin colors or environments.
 3 Sizes Available: Suitable for adults, children and newborns.
 5 Levels of Brightness: Adjust the projection image to the most comfortable brightness.
 Inversion: Reduce arm hair interference and make blood vessels clearer.
 Enhancement Mode: Enhance the clarity of blood vessel detection.
 Sleep Mode: enter into low power mode when the user needs short intervals and can be waked up quickly.



Vein Finder

VF-600

12 Colors Available: Suitable for different skin colors or environments
 3 Sizes Available: Suitable for adults, children and newborns
 6 Levels of Brightness: Adjust the projection image to the most comfortable brightness.
 Inversion: Reduce arm hair interference and make blood vessels clearer
 Enhancement Mode: Enhance the clarity of blood vessel detection.
 Sleep Mode: enter into low power mode when the user needs short intervals and can be waked up quickly.
 Photograph: Store venous images for medical staff to track and analyze pathology
 Automatic shutdown without operation for 35 minutes.



Vein Finder

VF-D30

Effective projection distance: 25cm-30cm(best distance 25CM)
 Light Lumens: 600~2300LUX
 Wavelength: 850-940nm
 Battery: 18650 removable lithium Battery
 Working voltage: DC3.7V 1.5A
 Charging voltage: DC5V2A
 Net weight: 0.5 kg
 Waterproof level: IPX0



Vein Finder

VF-D40

High precision 1:1
 5.5"HD TFT LCD Portable HD display
 Portable design: easy to carry
 Long-term battery life: can work continuously for 4h
 Display screen: multi-view display
 Near-infrared light from nature,no radiation



Electrosurgical Unit

DM-M45

Output modes:

- Pure Cut: 1W~350W(Max.400W,Load 500Ω)
- Blend :1W~250W (Load 500Ω)
- ENDO Cut99%(Load 500Ω)
- Desiccate Coag: 1W~120W(Load 500Ω)e)
- Spray Coag: 1W~80W(Load 500Q)
- Bipolar Coag: 1W~70W(Load 100Ω)



Electrosurgical Unit

DM-100

- Mono cutting: 100W
- Blend: 80W
- Mono coag soft coag: 60W
- Bipolar bipolar coag: 50W
- Ambient temperature range: 10°C~40°C
- Working frequency: 360kHz~460kHz
- The power consumption of the whole device is less than 1000VA



Electrosurgical Unit

DM-4005

- The output power: 400W
- Five output modes: 1.Cutting(400W) 2.Blend cut(150W) , 3.Soft Coag(100W)
- 4.Strong Coag(80W) , 5.Bipolar Coag(50W)
- Atmospheric pressure range: 86.0 ~ 106.0kpa;
- Power supply: 220V±22V,50Hz±1;
- Working frequency: 360 ~ 460kHz;
- The rated power of the equipment: 880VA±10%;
- Type of device: CF
- The machine power consumption: ≤1000VA



Electrosurgical Unit

DM-3506

- The output power: 350W
- Six output modes: 1.cutting(350w) 2.blend cut1(200W) 3.blend cut2(150W)
- 4.soft Coag(120w) 5.strong coag (100w) 6.bipolar coag(70w)
- Atmospheric pressure range: 86.0 ~ 106.0kpa;
- Powersupply:220V±22V,50Hz±1;
- Working frequency: 360~460kHz;
- The rated power of the equipment: 880VA±10%;
- Type of device: CF
- The machine power consumption: ≤1000VA



Electrosurgical Unit

DM-300B

- Multi-function high frequency electrotome, with 7 working modes, 2-way power output and stable performance
- Unipolar power: 0-300W.Bipolar power: 0-100W, meeting all kinds of surgical needs, suitable for general department
- 7 working modes: 1.Pure cutting, 2.Mixed cutting1, 3.Mixed cutting2, 4.Standard coagulation, 5.Sparying coagulation, 6.Bipolar1, 7.Bipolar2.
- Neutral plate monitoring system: Automatic Measurement of contact quality between Plate and skin.If contact
- Resistance is less than 140 Ω, host computer alarm and stop output.



Electrosurgical Unit

DM-4006

The output power: 400W
 Six output modes: ①cutting(400W) ②blendcut1(200W) ③blend cut2(150W)
 ④soft coag(120W) ④strong coag(100W) ⑥bipolar coag(70W)
 Atmospheric pressure range:86.0 ~ 106.0kpa;
 Power supply: 220V±22V,50Hz±1;
 Working frequency: 360 ~ 460kHz;
 The rated power of the equipment: 880VA±10%;
 Type of device: CF
 The machine power consumption: ≤1000VA



Electrosurgical Unit

DM-4009

Power & Output: output power: 400W, 9 modes:①Cutting (400W)②Blend Cut1-3 (250W/200W/150W)③Soft Coag (150W)④Strong Coag (120W)⑤Jet Coag (100W)⑥Bipolar Coag1-2 (100W/70W)
 Electrical Specifications: supply: 220V±22V, 50Hz±1Hz,frequency: 360-460kHz,fated power: 880VA±10%, max consumption: ≤1000VA
 Technical Parameters: type: CF, atmospheric range: 86.0-106.0kPa



Electrosurgical Unit

DM-3007

Seven output modes:
 1.cutting(300W), 2.blend cut1(200W), 3.blend cut2(150W), 4.soft coag (120W),
 5.strong coag (80W), 6.bipolar coag1 (50w), 7.bipolar coag2(50w)
 The output power: 300W
 Atmospheric pressure range: 86.0~106.0kpa;
 Power supply: 220V±22V,50Hz±1;
 Working frequency: 360 ~ 460kHz;
 The rated power of the equipment: 880VA±10%;
 The machine power consumption: ≤1000VA



Electrosurgical Unit

DM-300A

System Overview: Intelligent electrosurgical generator with intuitive interface
 Monopolar & bipolar functionality, Safety features: REM (Return Electrode Monitoring) with auto-shutoff for electrode faults
 Compatibility & Options: Works with: Argon Plasma Coagulation, Smoke Evacuation System, Underwater socket (endo cut), Multilingual support: English/Spanish/Portuguese/Turkish



Electrosurgical Unit

DM-Z400

400W
 7 work modes: Pure/Blend1/Blend2, Standard/Spray, Bipo1/Bipo2
 Increment of 5W micro power control system to ensure optimal effect
 Minimal sticking and carbonization, reduce the surgery damage
 Fast trouble-shooting by default error alarm system
 Auto-terminate of power output after 5 seconds to avoid misoperation
 Support endoscopes connection and underwater cutting



Electrosurgical Unit

DM-350A

MONO cut: Cutting: 400w (load 500), Blend 1:300w(load 500), Blend 2: 200w(load 800), Blend 3:100w(load 800), Blend 4:100W(load 800)
 MONO coag: Strong Coag1: 250w (load 800), Endo Coag :200w (load 500), Spray Coag :100w (load 500), Soft Coag: 80w (load 500), Fine Coag: 80W (load 500)
 BIPOLAR: Macro Bipolar: 200W (load 200), Standard Bipolar:100W (load , Fine Bipolar: 50W(load 200), Rapid Bipolar: 80W(load 200)



ICU Ventilator

VT-3010

Dimensions: 45*55*140cm
 Weight: 65kg
 Casters: central brake with lock
 Screen: 12.1 inch touch screen
 Display: colourLCD
 Display graphics: waveforms of P-T,F-T,V-T
 Pipeline input range: 280-600kPa
 Output pressure: 0.4±0.1MPa



ICU Ventilator

VT-3010A

Dimensions: 45*55*140cm
 Weight: 65kg
 Casters: Central brake with lock
 Screen control: Touch screen
 Output pressure: 0.4±0.1MPa
 Pressure range: 5-80 cmH₂O
 Respiration Rate Range : 1-150 bpm(1-40 bpm under SIMV)
 Oxygen concentration: 21%-100%
 Ptrigger Range: -20-0cmH₂O
 Battery Type: Lead-acid 12V,4Ah



Ventilator

VT-700B

Patient type: adult & pediatric patients
 Dimensions (H x W x D): 115 cm x 65 cm x 50 cm
 Weight: 42 kg
 Power: 220-240 V, 50-60 Hz (well grounded)
 Backup power: at least 30 minutes, nominally between 2 to 4 hours
 Display: 10.4 inch TFT display

- Tidal volume: adjustable range: 50-1500 ml, Display range: 0-2000 ml



Ventilator

VT-700A

Patient type: Adult & pediatric patients
 Dimensions (H x W x D): 124 cm x 67 cm x 60 cm
 Weight: 77 kg (with PA air compressor attached)
 Power: 220-240 V, 50-60 Hz (well grounded)
 Backup power: At least 30 minutes, nominally between 2 to 4 hours
 Display: 10.4 inch TFT display



Emergency & Transport Ventilator

VT-01

Main components: L 560 * W 560 * H 615 mm
 Setting range: 10 mL ~ 2000 mL
 Monitoring range: 0 ~ 3000 mL
 Minute ventilation: 0 ~ 120.0 L / min
 Apnea ventilation: 4s ~ 60s



Portable Ventilator

VT-2010T

Sealed Lead Acid, 12V: (>4Hours)
Screen Size(inch): 5.7
Pipeline input Range: 280 kPa ~ 600 kPa
Breathing Rate: 4 ~ 100/min
Inspiratory Duration: 0.2 ~ 6s



Portable Ventilator

VT-2020T

Operating Panel: English (Standard)
Display: 7 inch LCD
Drive: Gas Driven
Gas source: Pure air or Oxygen
Tidal Volume: 20-2000ml
Rate: 4-100/min, 1-40/min under SIMV
FiO2: 40%-100%
Car charger: 12V
Battery: ≥6 hours
Net Weight: Main Body<4KG



System Veterinary Anesthesia Ventilator

VT-20

Bellow: 0-300ml, 300-1500ml
Driving mode: pneumatically and electrically
Screen: 9 inch touch screen
Monitor: Tidal volume, breathing rate, I:E, peak pressure
Tidal volume: 20ml/min-1500ml/min



Anesthesia System

AM-01

Dimensions (HxWxD): 28 cm x95 cm x53 cm
 Weight: 95 kg (with 2 PA-80 vaporizers attached)
 Power: 220-240 V,50-60 Hz(well grounded)
 Backup power: at least 30 minutes,nominally between2 to 4 hours
 Display: LED alphanumeric display



Multifunctional Anesthesia Machine

AM-201A

Dimensions: 70*85*140cm
 Weight: 65kg
 Casters front wheels with lock
 Screen LCD
 Display: 10.1 inch
 Power: AC 110V~240V,50Hz/60Hz
 Battery power: ≥180 mins



Anesthesia System

AM-6100

Flowmeter: O₂ (0.1 ~ 10 L/min), N₂O (0.1 ~ 10 L/min), AIR (0.1 ~ 10 L/min)
 Rapid oxygen supply: 25 L/min ~ 75 L/min
 Tidal volume(Vt): 0, 20 mL ~ 1500 mL
 Frequency (Freq) : 1 /min ~ 100 /min



Basic Anesthesia System

AM-6100A

Flowmeter: O₂ (0 ~ 10 L/min), N₂O (0 ~ 10 L/min)
 Rapid oxygen supply: 25 L/min ~ 75 L/min
 Tidal volume(Vt): 0, 20 mL ~ 1500 mL
 MV: ≥18 L/min
 Frequency (Freq) : 1 /min ~ 100 /min



High Anesthesia System

AM-6100AH

Flowmeter: O₂ (0.1 ~ 10 L/min), N₂O (0.1 ~ 10 L/min), AIR (0.1 ~ 10 L/min)
 Rapid oxygen supply: 25 L/min ~ 75 L/min
 Tidal volume(Vt): 0, 20 mL ~ 1500 mL
 Maximum MV: ≥18 L/min
 Frequency (Freq) : 1 /min ~ 100 /min



Veterinary Anesthesia Machine

AM-L6

Compact light-weight and portable, could be transported by pull-rod case, put on table and assembly on the trolley.

Suitable for small animals, Jackson or Bains Absorber is available

Specifically designed to accommodate low flow

Selectatec-bar and quick change vaporizer mounting device

Professional airtight breathing circuit design, provide the stable gas anesthesia,

save anesthesia gas consumption, to ensure a clean operating room and laboratory environment.



Anesthesia Machine

AM-K02

Stable and reliable, meeting the basic needs of anesthesia surgery

5.7" high-definition LCD display

High precision flow control system ensures precise regulation of oxygen

High precision Vaporizer, available in four types: Enflurane, Isoflurane,

Sevoflurane, and Halothane

Highly integrated breathing circuit with APL valve, providing excellent sealing and safety

Scope of Application: Adult, Child

Gas Source : O₂: 0.28 ~ 0.6MPa

Flow Meter :O₂: 0.05 ~ 1.0L/min, 1.1 ~ 10L/min

Flow Rate of Rapid Oxygen Supply : 25 ~ 75L/min



Multifunctional Anesthesia Machine

AM-A06

10.1" Colorful TFT Touch Screen

Main Body: High-strength engineering plastic rack, light, beautiful and corrosion-resistant

Scope of Application: Adult, Child

Gas Source: O₂: 0.28~0.6MPa, N₂O: 0.28~0.6MPa

Flow Meter O₂: 0.05~1.0L/min, 1.1 ~ 10L/min, N₂O: 0.05 ~ 1.0L/min, 1.1~10L/min

O₂-N₂O Linkage and N₂O Stopper When using nitrous oxide, oxygen concentration > 25%; When the oxygen pressure < 0.16 ± 0.02 kPa the flow of nitrous oxide would be cut off.

Flow Rate of Rapid Oxygen supply: 25~75L/min

Low Oxygen Pressure Alarm: sound alarm when oxygen pressure < 0.2MPa



LED Medical Cold Light Source

END-L01

LED medical cold light source
Power: 80watt
Color temperature: $\geq 6500\text{k}$
Light image temperat
Digure: $\leq 80^{\circ}\text{C}$
Ital display with cooling fan
Working life is more than 20,000hours with timer function application:
laparoscopy, ENT, hysteroscopy, arthroscopy, urology, etc.
Light guide cable: 2.5meter, standard diameter



Medical Full HD Endoscope Camera

END-C01

Effective pixels:1920*1080; full hd camera 1080P;
Progressive scanning; anti-jamming processing;
Horizontal resolution:1080P(1000lines)
Video output: HDMI*4, SDI*1, BNC*1, VGA*1
Manual/ auto white balance; SNR (Signal to Noise Ratio): $\geq 50\text{dB}$
Digital zoom: 0-60X ; Brightness: ODS adjusting
Language: English, Chinese Application: Laparoscopy, ENT,
hysteroscopy, arthroscopy, urology, etc.
Including HD camera head:freeze button; white balance
Optical coupler: 28mm waterproof



Medical Monitor

END-M24

Screen size: 24" Power: 100~240W
Input signal: DVI, VGA, CVBS
Brightness: 300cd/m²
Contrast ration: 1000:1
Display size: 517*325(mm)
Dimension ratio: 16:9
Application: laparoscopy,hysteroscopy, ENT, arthroscopy,



Medical Endoscope Camera

END-C02

CVBS basic model , include processor+ camera head, with F18 mm coupler
Input:CVBS(800TVL)
Effective Pixel: 960(H)x576(V)
Output Resolution: 960H(50/60fps)



Led Cold Light Source

END-L02

100W light source
with 2.5m fiber cable



Medical Monitor

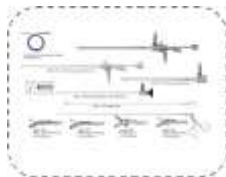
END-M22

1080P 22 inch monitor



Hysteroscope

HSS-11



Laparoscope HD

LP-10

HD camera



Laparoscope 4K

LP-40

100W light source
with 2.5m fiber cable



Co2 Insufflators

ISU-220

Rated power: 40VA;
Range of flow: 10-30L;
Range of pressure: 5-30mmHg;
Noise: ≤50dB;
Power: 100-240V, 50/60Hz;
Application: laparoscopy surgery



Endoscopic Pump

ENP-001

Washing and suction the effluent or fragment in the enterocoelia surgery;
Rate power: 50VA;
Range of pos-press: 10~50kPa;
Range of neg-press: -50~-10kPa ;
Power: 100-240V, 50/60Hz;
Application: laparoscopy surgery



Trolley

T-END01

670*610*1310mm;
Material: metal;
Suitable robust and corrosion resistant trolley with five-storey shelves with suitable distance between the shelves.
The trolley is provided with castors and two of the castors are lockable.



Monitor

END-M24-2

HD2410W-4K
 Model: HD2410W-4K
 Light: LED
 Screen size: 24 inches Resolution: 4096(H)*2160(V)
 Aspect ratio: 16:9
 Power: 12V
 Colortown: 16.7m
 Brightness: 750cd/m²
 Viewing angle: 178H/178V
 Bootspeed: 1ms video input: HDMI4k×1, HDMI×2, DP×1



Gastroscope

END-G01

GEV-H1100X Gastroscope $\varnothing 6\text{mm} \times 1100\text{mm}$
 Outer diameter of head end $\leq \varnothing 9.8\text{mm}/7.2\text{mm}/6.0\text{mm}$
 Outer diameter of main hoses $\leq \varnothing 9.6\text{mm}/7.0\text{mm}/5.8\text{mm}$
 Inner diameter of clamp pipe $\geq \varnothing 2.8\text{mm}/2.4\text{mm}/2.4\text{mm}$
 Pixels: 1,000,000 pixels Working length $\geq 1050\text{mm}$
 Total length $\geq 1335\text{mm}$
 Field of view $\geq 140^\circ$ (direct view)
 Observation depth $\geq 3-100\text{mm}$
 Resolution ≥ 1 million pixels CMOS HD-1080P
 Bending angle: $\geq 210^\circ$ upward $\geq 90^\circ$ downward left and right $\geq 100^\circ$
 maximum 230



Colonoscope

END-C01

GEV-H1300X Colonoscope $\varnothing 8\text{mm} \times 1500\text{mm}$
 Outer diameter of head end $\leq \varnothing 12.8\text{mm}/9.8\text{mm}$
 Outer diameter of main hoses $\leq \varnothing 12.8\text{mm}/9.6\text{mm}$
 Inner diameter of clamp pipe $\geq \varnothing 3.7\text{mm}/2.8\text{mm}$
 Pixels: 1,000,000 pixels Working length $\geq 1330\text{mm}$
 Total length $\geq 1650\text{mm}$
 Field of view $\geq 140^\circ$ (direct view)
 Observation depth $\geq 3-100\text{mm}$
 Resolution ≥ 1 million pixels CMOS HD-1080P
 Bending angle: $\geq 210^\circ$ upward $\geq 100^\circ$ downward $\geq 100^\circ$ left and right
 230° maximum



Processor / Button Type

END-C02

HJ-60 Processor / Button type
 Lamp: LED light (100w white)
 Power: 85~264VAC
 Color temperature: $\geq 5300\text{K}$, 140000lx illumination Brightness: 0-10 level adjustable Video signal output: HDMI x2, DVI
 Air pump pressure: 30-60Mpk, Air pump power: Strong/medium/weak 3 level adjustable Air flow: 4-10 L/min Vascular enhancement: Can increase vascular clarity
 Electronic amplification: Support 1.5/2.0 times 4-gear electronic amplification function.



Trolley

T-END02

480mm*500mm*1270mm 50KG

1. High-strength metal combined with high-performance plastic anti-collision comers and columns. which can be placed inside the dolly with all connecting lines, safe and beautiful.
2. The whole vehicle to meet the 80KG load bearing test.
3. Selflocking silent wheels.
4. Monitor fixed frame can bear 20Kg.
5. Camera fixing device, can place and protect the camera.
6. 4 layers of equipment pallets.



Full HD Endoscope System

END-370

Camera: 2,000,000 pixels 1/2.8"CMOS

Image size: 1920(H)*1080(V)

Video output: SDI,BNC, DVI,HDMI,USB

Handle wire: 2.8m/Length customized

LED Lamp power: 100W

Long life: 250000 Hours Power:85~264VAC

Monitor: 21"24"27"monitor, touch screen

Language: Chinese,English, Russian, Japanese and Spanish



Infusion Pump

IP-L01

4.3 inch color touch screen for easy operation and clear vision.
Compact and lightweight design for easy carrying and mounting.
User friendly interface with audible and visual alarm system.
Built-in lithium battery, around 5 hours working time after fully charged.
Multiple infusion modes to satisfy different infusion requirements.
Advanced pressure detection technology.



Infusion Pump

IP-710

Double CPU safer infusion.
3.2' brightness LCD, big brightness LCD display visually.
Numeric keypad very user friendly.
Occlusion detector safer infusion.
Occlusion, air-in-line, audio visual alarm volume: 10 settings.
3000mAh lithium battery backup life: ≥10 hours
IV sets: standard single use IVsets(10、15、20、60d/mL, with diameter 3.4 ~ 4.5mm)

Flow rate: 1.0ml/h ~ 1200ml/h; 1.0d/min ~ 400d/min
Flow rate: ±5%(after calibration)



Infusion Pump

IP-100

2.8 inch LCD numeric key button.
Numeric setting key for user friendly and easy operation.
Open system to match different brands of I.V sets.
One-button night mode design for patient better rest at night.
Dynamic pressure detection, more intelligent more safer.
Drug library and event Log 2000+ and can be customized.
Multiple infusion modes of rate mode: rate-Time mode, rate volume mode, body weight mode, drug library mode.



Infusion Pump

IP-1S

Open system - compatible with all standard IV sets.
Large color TFT display with adjustable brightness.
Anti-bolus system.
DPS dynamic pressure display.
2000 events stored can be checked and downloaded.
Five work modes: rate mode, time mode, dose mode, sequential mode and drug library mode.
Drug library with 1030 drug names (Optional).
Visual and audible alarm system and accurate infusion rate for safety and reliability.
KVO and bolus functions.
Automatically record the setting of last infusion.
Change the flow rate without stop during infusion
Three levels of the occlusion: high, middle, and low.



Infusion Pump

IP-100T

3.5 inch colorful & touch screen for easy operation
UI design friendly and clear for monitoring of infusion status with rate, time-left, VTBI, accumulated volume, pressure, drug name etc
DPS (Dynamic pressure detection) function, monitoring the pressure changes in real time
Body weight mode, drug library mode to meet different clinical use
Drug library & syringe brand library can be modified according to clinical use
5+ groups of historical treatment plan parameters are saved for clinical repeated setting
Drug library and event log 2000+ and can be customized



Infusion Pump

IP-2000

IV set requirement: Standard IV set(10, 15, 20drops/ml)
Flow rate setting range: 1~1200ml/h(0.1ml/h of 0.1-99.9ml/h(1ml/h of 100-1200ml/h)
Flow rate accuracy: +5
Deviation's compensation: range 0-±30(steped by 20)
KvO flow rate: 1mi/h(10ml/ h)3mi/h(10mi/h)
Purge rate: 800-999mh;1-9ml range of volume
Bolus flow rate range: 500~800ml/ h:1-9ml range of volume



Blood Infusion Warmer

IF-W01

Warming Up time:≤2min
Overheat Protection:46C
Small design, user-friendly.
2-mins fast heating to the set temp.
Long,Middle, Short heating groove.
Various temp. control protection technology.
C°and Funit convert.
35-42 C° heating range.



Blood Infusion Warmer

IF-W02

Temperature Setting: C:32°C~42.0°C; °F:86.9°F~107.6°F
Temperature Deviation: °C:±1°C; °F:±1.8°F
Temperature increment: °C:0.1°C; °F:0.2°F
Warming Up Time:<4min
Overheat Protection: 50±5°C, hardware and software protection
Display: 46x72mm
Heating Way: Dry silicone heating profile



Syringe Pump

SP-L01

- 4.3 inch color touch screen for clear vision
- Simple rate mode with one key start , easy to operate
- Compatible with various brands of syringe
- Various infusion modes to meet different clinical requirements
- User friendly interface with audible and visual alarm system
- Rechargeable lithium battery can work continuously for around 5 hours



Syringe Pump

SP-610E

- Double CPU design.
- 3.5TFT color LCD; 8 level brightness adjustable.
- Open system and can accept different syringe brand after calibration.
- High flow rate : 0.1-1800.0ml/h adjustable.
- High accuracy: The deviation is within $\pm 2\%$ after calibration.
- Friendly UI interface : UI interface menu, numeric keypad, more user friendly.
- Strong battery backup : 2200mAh battery and backup time more than 7hrs.
- Adjustable level : occlusion, alarm volume, 8 level adjustable.



Syringe Pump

SP-610

- Double CPU safer injection.
- 3.5TFT color LCD; 10 level brightness adjustable.
- Numeric keypad very user friendly.
- Double occlusion detector safer infusion.
- Occlusion, air-in-line, audio visual alarm volume: 10 settings.
- 3000mAh lithium battery backup life: > 9 hours.
- Accuracy : $\leq \pm 2\%$ ($\pm 1\%$ mechanical accuracy included)
- Injection Mode: Constant Rate, Time mode, Drug Weight, Micro, Sequential, Drug Library Mode
- Flow Rate : 0.10ml/h-600.00ml/h 50/60ml:0.10m/h-1200.00ml/h



Syringe Pump

SP-2022

- Applicable syringes: 10ml, 20ml, 30m1, 50m1, 60m
- Flow rate range: 0.1~3999rh(30m)01-5999nh(50m)60ml
- Flow rate accuracy: +2%
- KvO flow rate: 1mlh
- Aiams: eptyeareemptyocclusionreminder aarm,owbaerysyrngedisoscd
- syngine handspike error
- Battery operation: 4.0 hours at 25mlh



Syringe Pump

SP-100

- 2.8 inch LCD numeric key button.
- Numeric setting key for user friendly and easy operation.
- Automatic identify different syringe size from 5ml to 60ml.
- One-button night mode design for patient better rest at night.
- Multiple infusion modes of rate mode, rate-time mode, rate volume mode, body weight mode, drug library mode.
- Dynamic pressure detection, more intelligent more safer.
- Drug library and event log 2000+ and can be customized.
- Stackable design meet in different wards especially in ICU,CCU,NICU &OT.



Syringe Pump

SP-1S

Open system: Accepts all standard syringes of 5ml, 10ml, 20ml/30ml, 50ml/60ml.

Large COLOR LED display.

KVO/Bolus function.

Anti-bolus system to reduce significantly after occlusion sudden release.

Three work modes: Rate Mode, Time Mode, Dose Mode.

Identify the specifications of syringe automatically.

Freely Stackable: Users can freely stack one syringe pump onto another to provide multiple Solutions.

Visual and audible alarm system and accurate injection rate make the injection process safer and reliable.



Syringe Pump

SP-102

One-key to start Simple mode injection, which enables easier operation.

Human Voice Alarm System: 3 levels adjustable (high, mid, low)

Prevent accidental collision during injection to prevent operation errors.

Dual CPU: Guarantee for safer work.

Data upload function: optional, including operation, alarm and modification; trackable treatments are ensured.

Pressure Monitoring: 3 pressure levels are editable to ensure great injection accuracy

System Self-test: Safe guardian for every single use; System self-test is conducted every time turning on, including alarm indicator; pressure etc.



Syringe Pump

SP-100T

3.5 inch colorful & touch screen for easy operation.

UI design friendly and clear for monitoring of infusion status with Rate, time-left, VTBI, Accumulated volume, Pressure, Drug name etc.

DPS (Dynamic pressure detection), monitoring the pressure changes in real time.

Multiple infusion modes of Rate mode, Rate-Time mode, Rate Volume mode, Body weight mode, Drug library mode to meet different clinical use.

Drug library & Syringe brand library can be modified according to clinical use.

Drug library and Event Log 2000+ and can be customized.

5+ groups of historical treatment plan parameters are saved for clinical repeated setting.



Syringe Pump

SP-620

5.0" TFT color LcD; 10 level brightness adjustable.

Double CPU Safer Injection.

Big Brightness LCD Display Visually.

Numeric Keypad Very User Friendly.

Double Occlusion Detector Safer Infusion.

Occlusion, Air-in-Line, AudioVisual Alarm Volume: 10 settings.

3000mAh Lithium Battery Backup Life: ≥6 hours



Insulin Pump

ISP-300

Alarming method: Beep.
 Items of alarming: block, low energy, low reservoir, empty reservoir, large force, meal.

Number of CPU: dual CPU
 Volume of reservoir: 3.0ml

- Connection of infusion sets: standard luer lock connector.
- Battery: 1.5VAAA alkaline battery
 Grade of waterproof: IPX8
 Size: 78*52*20 mm



Insulin Pump

ISP-800

Loading mode: Refill cartridge directly(no need reservoir)

Size: 78mm×52mm×20mm

Weight: 77g (Not included AAAbattery)

Alarm method: Buzzer and vibration alarm

Low voltage: prompt when the voltage is lower than 1.2V

Base rate setting step amount:0.1U/0.05U

Base rate segment: 24/48 basal rates



Feeding Pump

FP-1S

Mode: Continuous mode, Feeding mode, Intermittent mode

Feeding rate: Range: 0.1-2000ml/h;

Increment: 0.1ml/h(0.1-99.9mlh)1mlh(100-2000mlh)

Accuracy: $\leq \pm 5\%$ (after correct calibration)

Target volume: Range: 0-99999 ml

Flushing rate: Range: 0.1~2000ml/hIncrement: 0.1ml/h or 1ml/h step

Flush Target volume: Range: 0.1-2000 ml

Purge rate: Range: 0.1~2000m/h, Increment: 0.1m/h or imlh step



Automated External Defibrillator

AED-101

Modes & Controls: Adult/pediatric, 3 buttons (ON/Off, shock, set)
 Waveform & Energy: Biphasic truncated exponential, max 200J
 Impedance & Voice: 20Ω–200Ω range, multilingual prompts
 Display & Indicators: Color LCD + LED
 Charge Time (25°C):
 150J (≤7s), 75J (≤3s)
 200J (≤10s), 50J (≤3s)
 Analysis Time: 9s



Automated External Defibrillator

AED-102

Waveform: biphasic truncated exponential
 Energy sequence(child): 50J,50J,50J
 Energy sequence(adult): 150J,200J,200J
 Charge time: 6 sec. to 150J, 8 sec. to 200 J(New battery)
 Analysis time: 6 sec.
 Visual prompts: LED prompts;Automatic Self-test
 Controls: four buttons On/Off, Shock, Adult/child, CPR
 Output energy accuracy: ±10% into any impedance from 25 to 175Ω
 The maximum voltage: 1400±50V
 Output disabled when the patient impedance is outside limits 20Ω to 200Ω.



Biphasic Defibrillator

AED-8000A

Waveform: biphasic
 Defibrillator type: manual external asynchronous defibrillation.
 Charge time: less than 10 seconds to 360 Joules
 Charge prompt type: voice and visual prompts.
 Energy selection: selectable at 0, 3, 5, 7, 10, 20, 30, 50, 100, 200, 300, 360 joules.
 Standard adult/pediatric paddles: reusable external adult paddles (pediatric paddles integrated)
 Standard type: sealed lead battery FP1223C 12Vdc 2300mAh X2.
 Standard capacity: up to 40 full-energy discharges.



Defi-Monitor

AED-8000C

Display & Monitoring: 7" high-res TFT color screen, Sweep speed: 12.5/25/50mm/sec, Parameters: ECG, HR, NIBP, SpO₂, temp
 Defibrillator Features: Manual external (sync/async), Charge time: <10s to 360J, Energy display: selected & delivered, Selectable energy: 0-360J (12 steps), Prompts: voice + visual
 Accessories & Power: Reusable adult paddles (integrated pediatric), Li-ion battery: 80% in 3h, 100% in 5h, Built-in 50mm thermal paper recorder



Defibrillator Monitor

AED-DM7000

Waveform: biphasic, 8 inch high resolution LCD display
 Sweep speed: 25mm/sec, Selection and limits, delivered energy.
 Information: HR, lead/pads, On/Off alarm, SpO₂, AED functions and prompts, alarm
 Charge time: less than 7 seconds with a new fully charged battery.
 ECG monitoring, Heart rate: 20-300BPM.
 Recorder speed: 12.5mm/sec, 25mm/sec, 50mm/sec; user-selectable 6-second delay.



Defi-Monitor

AED-8000D

Display & Printing: 7" TFT color display, 50mm thermal printing (high-resolution)
 Records: date/time, sweep speed (12.5/25/50mm/s), gain, HR, energy, ECG
 ECG Monitoring: 5-lead ECG with heart rate
 Defibrillation: Biphasic manual defibrillation (sync/async), ≤10s charge to 360J
 Displays selected/delivered energy



Automatic External Defibrillator

AED-9000

Display & Alerts : IED screen with auto brightness & self-test , visual/voice prompts (≥85dB) in 8 languages (one-key switch), Image prompts for models B1/B2/auto versions
 Data Management: stores ECG/impedance/recording data (100,000 events), wireless export for self-test/rescue reports, optional data export
 Defibrillation System: adult/pediatric modes, biphasic truncated exponential (BTE) waveform , output accuracy: ±10% (25-200Ω) , semi-auto output control (B1-B4 models)



Automatic External Defibrillator

AED-7000 Plus

Energy type: biphasic
 Analysis time: 9s
 8s charging to 200J
 ENERGY 150/150/200(default)
 150/200/200(customerized)
 200/200/200 (customerized)

Note: the energy sequence can be changed using the computer IR port .



Automatic External Defibrillator

AED-7000

Model & Waveform: series: standard, trainer, biphasic waveform
 Performance Specifications: analysis time: 7s, adult energy sequence: 150J→150J→200J, charge time: <8s (max energy, ≤15 battery uses), battery life: 250×200J or 320×150J discharges
 Technical Parameters: energy accuracy: ±5% (<50Ω), max voltage: 1100±50V, Impedance range: 20-200Ω
 Operation Features: voice + LED prompts



Automated External Defibrillator

AED-5S

Child mode: 50.50.75J, Adult Mode: 150.150.200J
 Infra-red: data transfer
 Self test: day.week.month
 REC built-in memory
 Sound volume: 5 Levels
 Carry case: for AED and first aid
 ECG waveform
 Biphasic function



Ventilator Cart

Mindray SV300 SV350 ventilator

Lamp stand: Wide and deep (42*46cm)
 Pole: Height 90cm
 Structure: Cart base die casting
 The whole thing is made of aluminum alloy.
 Surface medical color matching matte baking paint Staging: Made of iron plate and sheet metal
 For up and down two layers
 Suitable for matching the Mindray ventilator.
 Trundle: Four PU medical silent universal wheels
 Weight About 15kg, Bearing About 60kg
 Configure: Storage basket, power socket, side bracket rod can clamp bracket.



Portable X Ray Machine**XR-K100**

7 inchescreen
 Small Size, Light Weight, Modular Design
 Exposure Operation with Touch Screen Remote Control Power: 5.6kW
 Power Supply: 220VAC/110VAC,60/50Hz
 Working Frequency: 100kHz
 kV Range: 40-120kV
 mA Range: 20~100mA,8 Adjustable Gears
 s Range: 0.01s-6.3s
 mAs Range: 0.1mAs ~320mAS
 Exposure Mode: Manual and Remote Control

**Portable High Frequency X Ray Machine****XR-D100**

Power: 5.6kW
 Power Supply: 220VAC,60/50Hz
 Working Frequency: 220kHz
 kV Range: 40-130kV
 mA Range: 20~100mA ,10 Adjustable Gears
 s Range: 0.01s-10s
 mAs Range: 0.1mAs~630mAs
 Exposure Mode: Manua and Remote Control
 10 inches touch screen

**Portable X Ray Machine****XR-K125**

7 inchescreen
 Power: 8kW
 Power Supply: 220VAC/110VAC, 60/50Hz
 Working Frequency: 100kHz
 kV Range: 40-125kV
 mA Range: 20~125mA, 9 Adjustable Gears
 s Range: 0.01s-6.3s
 mAs Range: 0.1mAs ~400mAs
 Exposure Mode: Manual and Remote Control

**Portable X Ray Machine****XR-D160**

Power: 8kW
 Voltage: AC220V ± 10%
 kV Range: 40 ~ 125kV
 mA Range: 5 ~ 160mA
 mAs Range: 0.1-200mAs
 Working Frequency: 100kHz
 Exposure time: 0.0032S ~ 10S
 Single Focus: 2.0 mm
 Head size:420mm * 245mm * 240mm
 Head Weight:18KG

**Mobile X Ray Machine****XR-M320**

17-inch touchscreen LCD monitor.
 all-in-one machine with 8GB RAM and 500GB hard drive,
 Windows 10 Professional edition,
 Power: 20kW
 kV Range: 40~125kV
 mA Range: 10~320mA
 mAs Range: 0.1-320mAs
 Working Frequency:300kHz
 Exposure time:0.002S~10S
 With the battery: Full charge in 60 minutes
 The fully charged battery can take 400 image



Mobile X Ray Machine**XR-M50**

Power supply voltage: AC 220V±22V;
 Power frequency: 50Hz±0.5Hz;
 Power capacity: ≥5kVA;
 Power supply allows maximum internal resistance: 1 Ω
 Tube voltage: 40 - 90kV, 5kV per file;
 Tube current : 30mA, 50mA; Time: 0.05s - 6 s
 When the X-ray generator window is down, the distance between the focus and the ground is 450mm~1770mm;
 The angle of the X-ray generator around the horizontal axis is ±180 °; The X-ray generator rotation angle around vertical axis is ±90°;
 Overall dimensions:
 1290 (length) ×630 (width) ×1935 (height) (mm)

**Mobile X Ray Machine****XR-M100**

Specially for clinic/ward photography;
 Flexible mobile operating performance;
 The configuration of the filament voltage regulator circuit makes the parameters more stable;
 Wireless remote exposure, greatly reduces the radiation dose of doctors;
 When the X-ray generator window is down, the distance between the focus and the ground is 810mm~1790mm;
 X - ray generator transverse expansion range is 255mm;
 The left and right swing Angle is ±50;
 The angle of the X-ray generator around the horizontal axis is ±180 °
 Tube voltage: 40 - 90kV,
 Tube current : 15mA, 30mA, 60mA, 100mA
 Time: 0.08s - 6.3 s

**Medical Diagnostic X Ray Machine****XR-M300**

Supply Voltage: 380/220V±10%
 Power Frequency: 50Hz±1Hz
 Power Resistance: 0.24Ω (380V) 0.08Ω (220V)
 Power Capacity: 25kVA
 kV: 50 ~ 125kV (1kV/ Gear)
 mA: 50 mA (Small focus) 、 100 mA (Small focus)、 100 mA, 200 mA、 300 mA
 Time of exposure: 0.1 ~ 6.3s (Select by R10 series)

**Mobile Diagnostic X Ray Machine****XR-C1**

Power Supply: Single phase AC 220V±22V, 50Hz ~ 60Hz, Permissible maximum internal resistance of power supply≤0.5Ω,3.5kW
 Perspective Model and Conditions
 Manual Perspective: Tube voltage: 40 ~ 110kV (1kV/ Gear) ; Tube current: 0.3 ~ 5.0 mA (0.1 mA/ Gear) ;
 Photographic Mode and Conditions
 Tube voltage: 40 ~ 110 kV
 Tube current: 30 mA 35mA 40mA 50mA 70mA
 Time of exposure: 0.04 ~ 3.2s
 X ray tube type: X782D ;
 Small focus; 0.6×0.6(mm2) , Big focus: 1.5×1.5(mm2)
 C-arm up-down range: 400mm



Analog High Frequency X Ray Machine

DR-A200

7 inches touch screen
Output Power: 20KW
Power Voltage: 380V±38V/220V±22V
kV range: 40~125kV
mA range: 10~200mA
mAs range: 0.5~320mAs
Exposure time: 0.002~6.3S



Analog High Frequency X Ray Machine

DR-A630

10.4 inches touch screen
Output Power: 50KW
Power Voltage: 220V±22V
kV range: 40~150kV
mA range: 10~630mA
mAs range: 0.1~200mAs
Exposure time: 0.005~3.2S



Digital High Frequency X Ray Machine

DR-A800

10.4 inches touch screen
Output Power: 65KW
Power Voltage: 380V±38V
kV range:40~150kV
mA range:10~800mA
mAs range: 0.1~630mAs
Loading time:2~10000ms
Wire Flat Panel Detector: 17X17inch,computer, software
Profession Acquisition Software



Digital High Frequency X Ray Machine

DR-D200

7 inches touch screen
Output Power: 20KW
Power Voltage: 380V±38V/220V±22V
kV range: 40~125kV
mA range: 10~200mA
mAs range: 0.5~320mAs
Exposure time: 0.002~6.3S



Digital High Frequency X Ray Machine

DR-D630

10.4 inches touch screen
Output Power: 50KW
Power Voltage: 220V±22V
kV range: 40~150kV
mA range: 10~630mA
mAs range: 0.1~200mAs
Exposure time: 0.005~3.2S
Wire Flat Panel Detector: 17X17inch,computer, software
Profession Acquisition Software



Digital High Frequency X Ray Machine

DR-D800

10.4 inches touch screen
 Output Power: 65KW
 Power Voltage: 380V±38V
 kV range:40~150kV
 mA range:10~800mA
 mAs range: 0.1~630mAs
 Loading time:2~10000ms
 Wire Flat Panel Detector: 17X17inch,computer, software
 Profession Acquisition Software



Ceiling Suspended Digital X Ray System

XR-65DR

Output Power: 50KW
 Power Voltage: 380V±38V
 kV range: 40~150kV
 mA range: 10~630mA
 mAs range: 0.1~630mAs
 Loading time: 0.002~6.3ms
 Small focus: 0.6
 Large focus: 1.2
 Anode speed: 3000r/min



Ceiling Suspended Digital X Ray System

XR-65DR

Output Power: 65KW
 Power Voltage: 380V±38V
 kV range: 40~150kV
 mA range: 10~800mA
 mAs range: 0.1~630mAs
 Loading time: 2~10000ms
 Small focus: 0.6
 Large focus: 1.2
 Anode speed: 9700r/min



Handheld X Ray

XR-705

Compact design: Requires minimal space and accommodations and can be moved as needed.
 Integrated software solution: built-in workstation don't require installation and additional equipment.
 Taking images from multiple angles: Doesn't need to move patients.
 High Definition 7" touch screen design: Brings easy operation and clear images.
 A fully charged battery: Can expose more than 120 images at full power.
 Minimize radiation: To patient and operator with the lowest possible dose.



Handheld X Ray

XR-701

Charging power supply(VAC): 100-240V
 Output Power (w): 560
 kVrange (kv): 40-75
 mA range(mA): 2-8mA
 Exposure time(ms): 50-2000
 75kV: Improved image penetration
 >Improved bone identification
 8mA: Reduced required irradiation time
 >Reduced motion blurring
 0.4 mm: Focal Spot
 >High resolution
 Laptop Application: Wireless Connectivity with laptop
 Wireless X-ray exposure switch



Digital Dental X Ray Machine Model

XR-D01

Tube voltage: 65kv
 Tube current: 1mA
 Time exposure: 0.1~1.8s
 High pressure generator: 30kHz DC
 Rated power: 60w
 Focal spot to skin distance: >20CM
 Focus spot size: 0.3mm(TOSHIBA)
 Charger input voltage: AC110V ~ 220V
 Supply Frequency: 30Hz
 Radiation Leakage: <20ugy/h
 Battery: 24V DC 2600MA
 Weight: 2KG
 Dimensions: 37 cm×31 cm×28cm (L×W×H)



High Frequency Portable Dental X Ray Machine

XR-D02

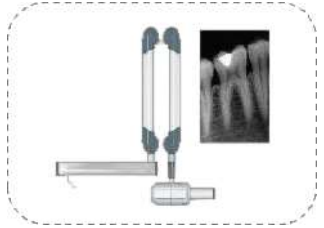
X-ray tubing Type: bipolar fixed x-ray tube
 X-ray tube Model: DG-073B-DC
 The size of x-ray tube focal spot: 0.3*0.3mm
 ANODE heating unit: 8.5Khu
 Maximum tube voltage: 75KV
 Target angle: 21°
 Total filtration: 1.6mmAL (Origin filtration: 0.8mmAL, Additional filtration: 1mmAL)
 X-ray irradiation range: 73mm (roundness)



Dental Portable X Ray Machine

XR-D10

Power Voltage:AC 230V±10%
 Frequency:50/60Hz
 Electric Plug:Three-core(European standard) Ultimate Capacity:900VA
 Electric Current:4A
 Fuse:6.3A
 Focus:0.8mm
 Rated High-Voltage:70KV±10%
 Tube-Head Current:7mA±20%
 Anode Angle:19
 Load Cycle:1/60
 Half Value Layer:1.6mmAL under 70kv
 Inherent Filtration:≥2.1mmAl
 Radiation Leakage:<0.07mGy/h
 Exposure Time:0.06~2.00s



Dental Portable X Ray Machine

XR-D20

Power Voltage:AC 220V
 Frequency:50/60Hz
 Maximum Power:900VA
 Electricity:4A
 Fuse:6.3A
 Bulb Tube:CANON
 Ray Focal Spot:0.7mm
 Bulb Tube Voltage:70KV ± 10%
 Anode Current:7mA± 20%
 Anode Angle:19
 Duty Cycle:1/30
 Half Value Layer:70Kv 1.6mm Al
 Inherent Filtration:≥2.1mm Al
 Leakage Radiation:1meter< 0.007mGy/h
 Time Of Exposure:0.06-2.0s



Dental Portable X Ray Machine**XR-D30**

Tube voltage 60KV
 Tube current 2.0mA
 Exposure time 0.1-1.2s
 Frequency 30KHz
 Rated power 120VA
 Distance from focus to skin 118mm
 Tube focus point 0.8mm*0. 8mm
 Battery 2200mAh
 Environmental temperature 5°C-40°C
 Relative humidity <75%RH
 Net weight 1.9KG
 Gross weight 4.2KG
 Dimensions (mm) 168*158*130
 Package size (mm) 365*330*275

**Digital Mammography System****Technical Specifications Table****XR-MMS**

Input Power Single Phase, 200-240 V AC
 Max. Output Power 5 kW
 Current Range (mA) 10 mA ~ 160 mA
 Exposure Voltage Range(kV) 20 kV ~ 40 kV
 Current Exposure Time Product(mAs) 0.5 mAs ~ 500 mAs
 Exposure Time Range(ms) 5 ms ~ 10000 ms
 Max Current(mA) 160 mA
 Focal Spot 0.1 mm /0,3 mm
 Anode Target Angle 10°/15° Anode Target Material Mo
 Rotation Speed 10000 rpm
 Max. kW Ratings 4kW, 16 kW
 Exposure Voltage 20 ~ 49kV
 Anode Heat Capacity 300 kHU

**Portable X Ray Detector****XR-4343**

Pixel Pitch: 140 µm
 Pixel Matrix: 3072X3072
 ADC: 16-bit
 Gain Stage: Multi-Gain
 Scintillator: GOS/CSI
 Water Proof: IPX0
 Interface: Quick self-locking connector
 Calibration: Software, Firmware
 Radiation Hardness: ≥10000Gy

**Portable X Ray Detector****XR-3543**

Pixel Pitch: 140 µm
 Pixel Matrix: 2500 x 3052
 ADC: 16-bit
 Gain Stage: Multi-Gain
 Scintillator: GOS/CSI
 Water Proof: IPX0
 Interface: Quick self-locking connector
 Calibration: Software, Firmware
 Radiation Hardness: ≥10000Gy



Dental Digital X Ray Sensor**HDR500**

APS CMOS technology:
 18.5um pixel size, 5T pixel type, Real resolution > 20 lp/mm.
 Powerful image processing & preprocessing
 Easy to operate
 Multi-user solution
 Connectable to the most management systems on the market under DiCOM3.0 protocol.

**Printer****XR-111**

Print Technology: Direct thermal (dry, daylight-load film)
 Spatial Resolution: 320dpi(12.6 pixels/mm)
 Throughput: 14"x17">70 sheets/h; 8"x10">90 sheets/h
 Grayscale Resolution: 14 bits
 Film Tray: One supply tray, 100-sheet capacity total.
 Film Sizes: 8"x10", 10"x12", 11"x14", 14"x17"
 Applicable Film: Medical Dry Thermal Film (blue or clear base)

**Printer****XR-L2901**

320 DPI
 English Interface, Touch screen
 Mammography Printing
 Two Trays On-line, 4 Sizes of Film Available
 Print speed: (14x17)in ,75 sheets/hour ;first sheet<75S
 Greyscale Contrast Resolution: 14bits
 Maximum density: 3.0 DMAX
 Film Transferring Mode: Suction Mode

**Portable X-ray Machine****XR-G01**

voltage: 45-75KV
 current: 0.25-0.5mA Continuous adjustable
 field of view: Φ50mm
 resolution ratio: 240lp/cm
 contrast ratio: 4%
 gray level: Level 7
 source: 220V (single phase three wire)
 power: ≤200w

**Chest Stand****HR-CT02**

The maximum stroke of the film box moving up and down is 1100 mm;
 The width of the card slot is suitable for boards with a thickness ≤35 mm;
 The left-right and up-down deviation of the center of the DR flat panel detector and the center of the cassette is not more than ± 5 mm
 Within the stroke range, the left and right deviation of the center of the cassette is not more than ± 5mm
 Dimensions of DR flat panel detector, CR IP board and cassette:
 DR flat panel detector, CR IP board, cassette size: 5 " × 7 " -17 " × 17 "
 The maximum size that the clip can hold up and down is 495 mm, the left and right width is not limited



X Ray Table
XT130



Film Viewer
FV-04

Size: 860*510*25
Reading area: 720*425
Max power(W): 50W
8000k color temperature
Light source with 100,000 hours of service life
Global voltage adaptive built-in power supply
Brightness range 0-4500cd/m
Automatic sensing,insert in and light up
Stainless steel rolling needle oblique compression
Wall-mounted



X Ray Viewer
EK-XV10

Case: white enamelled steel
Light source: fluorescent tube, "daylight" type
Colour temperature: 6500° Kelvin
Uniform light distribution
4 x 15 W tubes
Translucent front panel
Film held with roller grip
Lateral switch



Films
XF-810

Suitable for inkjet
printer imaging
8*10 inches
Blue based



Printer
XR110

Available Size :8*10, 10*12,
A4, 11*14, 13*17, A3
Color: 5 Colors,Dye ink
Cartridge Capacity:
160ML
Printing Method: Bubble
Inkjet Technology Printing
Maximum Printing
Resolution: 9600*2400dpi



X RAY Apron
XP10

- Single side
- Radiation Shielding Apron



X RAY Apron
XP20

- Double sides
- Radiation Shielding Apron



LED Shadowless Operating Lamp

OL-700/700

Technical Parameters:OL-700 700
 Illumination (Lux):40,000-160,000,Lux 40,000-160,000Lux
 Lamp Bulb Quantity:80,80
 Bulb Type: German OSRAM LED , German OSRAM LED
 Color Temp (K) : 3700K ~ 5000K, 3700K ~ 5000K
 Color Rendering Index (CRI) : 85 ~ 98 , 85 ~ 98
 Illumination Depth(mm):50-180cm,50-180cm
 Facular Diameter(mm):120-280mm,120-280mm



LED Shadowless Operating Lamp

OL-700/500

Technical Parameters: OL-700 500
 Illumination (Lux):40,000-160,000,Lux 30,000-160,000Lux
 Lamp Bulb Quantity:80,48
 Bulb Type: German OSRAM LED , German OSRAM LED
 Color Temp (K) : 3700K ~ 5000K, 3700K ~ 5000K
 Color Rendering Index (CRI) : 85 ~ 98 , 85 ~ 98
 Illumination Depth(mm):50-180cm,50-180cm
 Facular Diameter(mm):120-280mm,120-280mm



Shadowless Operating Lamp

OL-380/380

Technical Parameters :OL-380 380
 Illumination (Lux) :10,000-100,000Lux ,10,000-100,000Lux
 Lamp Bulb Quantity :24 ,24
 Bulb Type :German OSRAM LED bulb ,German OSRAM LED bulb
 Bulb Average Life :≥80, 000h ,≥80, 000h
 Color Temp (K) : 3700K ~ 5000K ,3700K ~ 5000K
 Color Rendering Index (CRI) :85 ~ 98 , 85 ~ 98
 Illumination Depth(mm) :108cm ,108cm
 Facular Diameter(mm) :200mm ,200mm



Surgical Lamp

OL-380

Shance (adjustable) :10,000-100,000L ux
 The number of bulb :Twenty-four
 Light bulb type : LED
 Average light bulb life span :≥80, 000h
 Color temperature(adjustable) :3700K ~ 5000K
 Display index (adjustable) :85 ~ 98
 Depth of focus :108cm
 Spot diameter :200mm
 Brightness control :1%-100%



Surgical Lamp

OL-500

Illumination (adjustable) :30,000-160,000Lux
 Number of bulbs :36
 Lamp type : LED
 Average lamp life :≥ 80,000 h
 Color temperature (non-adjustable) :3700K ~ 5000K
 Display index (adjustable) :85 ~ 98
 Focusing depth :108cm
 Spot diameter :200mm



Surgical Lamp

OL-380

Technical parameter :OL-380
 Shance (adjustable) :10,000-100,000L ux
 The number of bulb :Twenty-four
 Light bulb type : LED
 Average light bulb life span :≥80, 000h
 Color temperature(adjustable) :3700K ~ 5000K
 Display index (adjustable) :85 ~ 98
 Depth of focus :108cm
 Spot diameter :200mm
 Brightness control :1%-100%



Surgical Lamp

OL-480

Technical specifications : OL-480
 Illumination (adjustable) :30,000-160,000Lux
 Number of bulbs :36
 Lamp type : LED
 Average lamp life :≥ 80,000 h
 Color temperature (non-adjustable) :3700K ~ 5000K
 Display index (adjustable) :85 ~ 98
 Focusing depth :108cm
 Spot diameter :200mm



Operating Light

OL-P500

Number of LED bulbs : 39
 Illumination (Lux) : 60,000-160,000
 Color temperature (K) : 3500-5000
 Spot diameter (mm):160-350
 Color rendering index: 85-98 (adjustable)
 Lighting depth (mm) : ≥1200
 The head temperature of the surgeon was : <1°C
 Power supply voltage : AC100-240V 50/60HZ
 Input power (W) : 220



Operating Light

OL-P700

Number of LED bulbs : 61
 Illumination (Lux) : 60,000-160,000
 Color temperature (K) : 3500-5000
 Spot diameter (mm) : 160-350
 Color rendering index : 85-98 (adjustable)
 Lighting depth (mm) : ≥1200
 The head temperature of the surgeon was : <1°C
 Power supply voltage : AC100-240V 50/60HZ
 Input power (W) : 220



Operating Shadowless Lamp

OL-P700 500

Number of LED bulbs : 61 /39
 Illuminance (Lux) : 60,000-160,000/60,000-160,000
 Color temperature (K):3500-5000
 Spot diameter (mm) :160-350
 Color rendering index :85-98 (adjustable)
 Lighting depth (mm) : ≥1200
 The head temperature of the surgeon was : <1°C
 Power supply voltage :AC100-240V 50/60HZ
 Input power (W) :220



Examination Lamp

EL-12

LED 12 Hole Cold and Warm Color Temperature Lamp head size :18*10CM(12 beads) Spring arm : 70cm Steel main bracket height: 105cm
 ● 6.5KG Universal Base Size : 55cm Power : 12W



Examination Lamp

EL-06

LED 7 Hole Cold and Warm Color Temperature Medical Examination Lamp Lamp head size: 12*7cm (7 hole) Cold and Warm Color Temperature Goose neck tube: 60cm Pole height: 100cm Size of PP pentagonal base: 50cm Power : 7W



Examination Lamp

EL-08

LED 7 hole cold and warm color temperature medical examination light Lamp head size : 13*7cm Cold and Warm Color Temperature Goose neck tube : 60cm Pole height 100cm Size of pentagonal base 50cm Power : 12W



Examination Lamp

EL-9

LED 7 Hole Cold and Warm Color Temperature Medical Examination Lamp Lamp head size:12 * 7 cm Cold and Warm Color Temperature Goose necktube: 30cm Pole height: 90-1200cm Size of pentagonal base: 50cm Power: 7W



Examination Lamp

EL-03

LED Single Hole Spring Arm Medical Examination Lamp Lamp head size: 10*18cm Spring support arm 70cm Pole height: 100cm Size of pentagonal base: 50cm Power: 12W



Examination Lamp

EL-02

LED Single Hole Cold and Warm Color Temperature Medical Examination Lamp Lamp head size: 7*13cm Goose neck tube: 70cm Pole height : 100cm Cold and Warm Color Temperature Size of pentagonal base : 50cm Power : 12W



Examination Lamp

EL-04

LED Single Hole Spotlight Lamp head size: 11.5*3cm Goose necktube: 60cm Pole height: 100cm Size of pentagonal base: 50cm Power: 3W



Electric 2 Function Hospital Bed

HB-E02

Type: electric, 2 functions
 Headboard and footboard: one-step injection molding with ABS technology.
 Guardrail: aluminum alloy steel foldable 5-speed
 Wheel: ABS mute wheel, sturdy and durable, rolling more flexible, no noise no sloshing
 Infusion rod: stainless steel material, flexible operation, easy and convenient
 Mattress: 6cm thick high-grade waterproof cloth, easy to clean and disinfect
 Applicable people: old, young, sick, paralyzed and other inconvenient people
 Material: metal, ABS



Electric 2 Function Hospital Bed

HB-E02B

center control brake
 4 layers handrails
 2 electric functions
 Wheel: ABS mute wheel, Sturdy and durable, rolling more flexible, no noise no sloshing
 Mattress: 6cm thick high-grade waterproof cloth, easy to clean and disinfect



Electric 3 Function Hospital Bed

HB-E03

Type: Electric, 3 functions
 Size: 2150*980*500mm
 Height: 420mm-620mm
 Headboard And Footboard: One-step injection molding with ABS technology
 Guardrail: Aluminum alloy steel foldable 5-speed
 Wheel: ABS mute wheel, Sturdy and durable, rolling more flexible, no noise no sloshing
 Infusion rod: Stainless steel material, flexible operation, easy and convenient
 Mattress: 6cm thick high-grade waterproof cloth, easy to clean and disinfect
 Material: Metal, ABS



Five Function Electric Hospital Bed

HB-E05

Function: Electric, 5 functions, Backrest, foot section adjustment, lateral turning, etc
 External size: 215*118*44-71cm
 Headboard And Footboard: One-step injection molding with ABS technology
 Guardrail: Aluminum alloy steel foldable 5-speed
 Wheel: ABS mute wheel, Sturdy and durable, rolling more flexible, no noise no sloshing
 Infusion rod: Stainless steel material, flexible operation, easy and convenient
 Mattress: 6cm thick high-grade waterproof cloth, easy to clean and disinfect
 Material: High Strength Steel, ABS



Flat Bed

HB-F01

L2020xW900xH500mm
 Thickened steel pipe



Single Crank Hospital Bed

HB-M01

Headboard And Footboard: One-step injection molding with ABS technology
 Guardrail: Aluminum alloy steel foldable 5-speed
 Wheel: ABS mute wheel,Sturdy and durable,rolling more flexible, no noise no sloshing
 Infusion rod: Stainless steel material,flexible operation,easy and convenient
 Mattress: 6cm thick high-grade waterproof cloth,easy to clean and disinfect
 Applicable people: Old,young,sick,paralyzed and other inconvenient people
 Material: Metal



2 Crank Hospital Bed

HB-M02

Function: 2 functions
 Internal diameter: 1900*900*500mm
 External diameter: 2050*960*500mm
 Headboard And Footboard: One-step injection molding with ABS technology
 Guardrail: Aluminum alloy steel foldable 5-speed guardrail
 Wheel: ABS mute wheel,Sturdy and durable,rolling more flexible, no noise no sloshing
 Infusion rod: Stainless steel material,flexible operation,easy and convenient
 Mattress: 6cm thick high-grade waterproof cloth,easy to clean and disinfect
 Applicable people: Old,young,sick,paralyzed and other inconvenient people
 Material: Metal



3 Crank Hospital Bed

HB-M03

Function: 3 functions
 Internal diameter: 1960*900*(440-640)mm
 External diameter: 2050*960*500mm
 Headboard And Footboard: One-step injection molding with ABS technology
 Guardrail: Aluminum alloy steel foldable 5-speed
 Wheel: ABS mute wheel,Sturdy and durable,rolling more flexible, no noise no sloshing
 Infusion rod: Stainless steel material,flexible operation,easy and convenient
 Mattress: 6cm thick high-grade waterproof cloth,easy to clean and disinfect
 Applicable people: Old,young,sick,paralyzed and other inconvenient people
 Material: High Strength Steel



ICU Electric Bed

OB-DB502

Position adjustment function back lift 0-70°
 Knee lift 0-25°
 High and low lift 420-770mm
 Overall tilt 0-14°
 Back and knee linkage
 Electric CPR function
 The battery power display is set on the front guardrail, which can clearly display the battery state



Electric Hospital Bed

HB-W01

Electric bed (thrombolysis)
 ABS electronic control bedside, electronic control four small guardrail, central control brake, weighing function
 ●Size: 2290*1060*480 / 730 mm (excluding bedside height)



Air Mattress

HB-S10

Working noise lower than 25db,
 Medical class PVC
 190*90cm
 Maxium bearing weight:135kg



Comprehensive Deliver Table

DB-100

Top length: ≥1950 mm;
 Top width: 600 mm;
 Top height adjustment: 630-880mm;
 Upper / lower back: ≥ 60° / 10°;
 Forward: ≥10°; back: ≥25°;



Comprehensive Deliver Table

DB-400

Length and width of bed surface: 1850mm width 600mm
 Minimum and highest height of the bed surface: 740mm~1000mm
 Angle in front of bed: 10° forward and 25° backward
 Backplane folding Angle: fold 75° fold 10°



Gynecologic Obstetric Table

DB-MG01

1680x600*800;
 Backrest: about 600x750mm;
 Buttocks: about 600x400mm;
 Leg front board: about 600x450mm;
 Components: mat, support frame, bed board, bed leg frame;
 The bed legs are welded with 30x30mm thick>1.2mm rectangular steel, and the horizontal scale between the bed legs is a 22mm thick>0.9mm rectangular steel pipe.

The surface is sandblasted for corrosion protection, and the surface is high-pressure electrostatic spray coating.

The footrest of the delivery bed is made of 25*25>1.1 rectangular steel pipe:

The welding is firm, without sand holes, burns, cold cracks, and leaking welding.

The bending part of the bed leg is symmetrical, the angle is gentle, and the bending angle is consistent.

The leg support frame and handle are firmly fixed;

The leg support bracket of the delivery bed is formed by a medium 12 round steel car, and the back support steel plate is 1.5mm thick.



Operation Tables Manual/Hydraulic

OB-MH3001A

Length :2050mm; Width480mm; Height:780~1030mm
 Max Reversed Trendelenburg: $\geq 30^\circ$
 Max Trendelenburg: $\geq 20^\circ$
 Max Lateral Tilt: $\geq 18^\circ$
 Head-Rest raised from the horizon: $\geq 45^\circ$
 Head-Rest lowered from the horizon: $\geq 90^\circ$



Side Manipulating Operation Tables Manual

OB-MH3001

Length: 2050mm
 Width: 480mm
 Height: 780~1030mm
 Max reversed trendelenburg: $\geq 30^\circ$
 Max trendelenburg: $\geq 20^\circ$
 Max lateral tilt: $\geq 18^\circ$
 Head-rest raised from the horizon: $\geq 45^\circ$
 Head-rest lowered from the horizon: $\geq 90^\circ$



Comprehensive Operation Table

OB-MH3008B

Top length: 1950 mm, top width: 520 mm, top height adjustment: 720-970mm;
 Back and backward: $\geq 30^\circ$
 Left and right: $\geq 20^\circ$
 Upper / lower folding of backplane: $\geq 80^\circ / 10^\circ$
 Upper / lower folding of head plate: $\geq 45^\circ / 90^\circ$
 Waist plate adjustment: ≥ 120 mm
 Leg plate lower folding: $\geq 90^\circ$
 Leg plate abduction: $\geq 90^\circ$



Orthopedic Tractor

ORP-01

1800mm*410mm*800mm
 high quality 304 stainless steel
 The pelvic frame has the left, middle and right three alternative insertion positions
 6 stainless steel universal brake wheels, easy to move and positioning
 rising and descent range: 30 cm



Comprehensive Operation Table

OB-H3001D

Full length of table: 2050mm; table width: 500mm;
 Table height adjustment: 770-1020mm;
 Forward: $\geq 25^\circ$; backward: $\geq 20^\circ$; left and right: $\geq 18^\circ$;
 Longitudinal translation: ≥ 300 mm;
 Upper / lower folding of backplane: $\geq 60^\circ / 15^\circ$;
 Upper / lower folding of head: $\geq 45^\circ / 90^\circ$;
 Waist plate adjustment: ≥ 120 mm; leg plate lower folding: $\geq 90^\circ$;
 Leg plate abduction: $\geq 90^\circ$;



Ophtamology Operation Bed Hydroalic

OB-H3008

Specially designed for eye surgery
 Hydroalic type
 Full length of table: 1950 mm; table width: 550 mm;
 Table lifting height adjustment range: 520-770mm; head plate lifting adjustment range: 100mm
 Configuration list
 Stand arm 1 set, carrier 1 set; mattress 1 set



Ophtamology Operation Bed Eletric

OB-E3008

Specially designed for eye surgery
 Eletric type
 Full length of table: 1950 mm; table width: 550 mm;
 Table lifting height adjustment range: 520-770mm; head plate lifting adjustment range: 100mm
 Configuration list
 Stand arm 1 set, carrier 1 set; mattress 1 set



Electro Hydraulic Operating Table

OB-R04

The table range is 2050mm, the table width is 520mm,
 The table height is 600-1030mm, and the table lifting stroke is 430mm
 Lean forward $\geq 30^\circ$, Lean back $\geq 30^\circ$,
 Lean to the left $\geq 20^\circ$, Lean to the right $\geq 20^\circ$,
 The head plate folding Angle (manual), Fold up $\geq 30^\circ$, Fold down $\geq 90^\circ$, removable,
 the leg plate folding Angle (manual), Fold down $\geq 90^\circ$, Stretch outward $\geq 90^\circ$,
 removable,
 The back plate folding Angle, Fold up $\geq 80^\circ$, Fold down $\geq 40^\circ$
 The waist plate rising stroke is 130mm, the maximum translation distance of the table is 350mm, and the rated bearing capacity is 320kg



Comprehensive Electric Operating Table

OB-E700

Length and width of the table: 2010mm* 500mm
 Table lowest and highest: 700mm*1000mm
 The maximum slope Angle of the table: forward 25° and back $\geq 20^\circ$
 Maximum Angle of left and right: right $\geq 20^\circ$ and left $\geq 20^\circ$
 Leg plate adjustment range: up fold $\geq 90^\circ$ detachable abduction 180°
 Backplane adjustment range: up fold $\geq 75^\circ$, down fold $\geq 10^\circ$
 Head plate adjustment range: top fold $\geq 45^\circ$, bottom fold $\geq 90^\circ$ can be folded unloading
 Pan function: pan ≥ 400 mm
 Waist bridge lift distance: 120mm



Normal Operating Table

OB-M3002

Full length of table: 2000mm; table width: 480mm; table minimum height: 720mm;
 Table lifting stroke: 250mm; upper folding of head: $\geq 60^\circ$; lower folding of head: $\geq 90^\circ$;
 Upper folding of backplane: $\geq 75^\circ$; lower folding of backplane: $\geq 20^\circ$;
 Leg plate lower folding: $\geq 90^\circ$; Waist plate adjustment: ≥ 120 mm;



Hydraulic Transfer Stretcher

TB-100

Hydraulic medical stretcher
 Size: 2120*840*550-860mm
 Standard Configurations:
 High quality hydraulic pump(2)
 X-ray transparent material backboard
 One pair of aluminum alloy folding side rails
 Φ200mm Luxury single-sided central locking castors(4)
 Steering castor, Base cover, IV pole(1), 6cm Mattress(1), X-ray clip (1)



Manual Transfer Stretcher

TB-200

Product name: Manual trolley (two guardrails)
 Size: 1930*640*530-820mm
 Standard Configurations:
 Manual crank system (1)
 One pair of PP side rails
 150mm Luxury two-sided central locking castors (4)
 Steering castor, 2cm Mattress(1)
 Oxygen bottle rack, IV pole(1)
 (Optional thickened mattress)



Transfer Stretcher

TB-210

Made of high-strength aluminum alloy thick-wall pipes
 Foamed cushion bed surface and the adjustable back
 One person is enough to send the patient
 Mechanical foldaway legs, controlled by the handles on both ends of the stretcher
 Legs can be folded under the stretcher automatically
 The stretcher can be locked by the fixing devices
 Characterized by its being light, durable antiseptic easy for sterilization



Electric Stretcher

TB-300

Main frame is made of cold rolled steel pipe, and the bed surface is made of ABS material
 Specifications: 1930*640*540-890mm
 The frame structure is stable and the push is flexible; the height of the whole vehicle can be adjusted: 540-890mm
 Backplane lifting, the backplane air pressure assistance can be adjusted from 0 to 70 degrees, CPR function can be released quickly, and it has an adjustable stainless steel infusion rod.



Bed Head Unit

BHU-01

All ports can be customized
Blue/green/wood can be choose



Crash Cart/Emergency Trolley

CC-100

5 drawers
2 doors
IV pole



Anesthesia Trolley

AT-101

750 * 475 * 950mm

Mainly composed of aluminum, steel and ABS engineering plastic structure
Retractable design auxiliary workbench, detachable large placement box
Rotating 3-liter round sharp box, flip color separation bin 175 * 175 * 280MM
Central control lock rotary, equipped with five layers of size drawer



Baby Cart

BC-200

Bed size: L900xW550xH850-1000mm±20mm

Made of transparent ABS, equipped with diversion groove and ventilation hole, sturdy and durable, easy to observe and easy to clean.

The whole bed is made of ABS one-time injection molding, which is bright in color and durable.

The baby basin can be tilted, the angle range is 0-12 degrees, which effectively prevents the baby from leaking milk and choking after eating, and protects the safety of the baby's lungs.

Choose from green, pink, or blue.



Overbed Table OV-005

Hydraulic table



Overbed Table OV-002



Bedside Cabinet BC-01

Small size
Bedside Cabinet



Bedside Cabinet BC-02

Large size
Bedside Cabinet



Bedside Cabinet BC-FS1

480*460*840MM
HPL materials



Strecher STH-10

Maxium 150kgs
Stainless steel
200x54x18cm full size
100x30x10 fold size



Narcotic Locker NAL-4

Inner size:31*31*46
External size: 43*43*56
Capacity: 15L
Fire proof
Single door, double
locker (keys and electric
key)



Steel Cabinet with Glass SS-100

Hospital Furniture
Stainless steel cabinet
Environmental Powder
Coating
H1800*W1200*
D280*D500mm



Instrument Trolley

SS-T01

2 layers
Detachable
Large: 80*48*86cm
Medium: 66*44*86cm
Small: 60*40*86cm



Instrument Trolley

SS-RZ10

3 layers, 1 drawer
Detachable
XL: 80*48*88cm
Large: 66*44*86cm
Medium: 60*40*86cm
Small: 50*40*88cm



Instrument Trolley

SS-T02

2 layers, 1 drawer
Detachable
Large: 80*48*86cm
Medium: 66*44*86cm
Small: 60*40*86cm



Instrument Trolley

SS-T03

2 layers, 2 drawers
Detachable
Large: 80*48*86cm
Medium: 66*44*86cm
Small: 60*40*86cm



Instrument Trolley

SS-T04

3 layers, 1 drawer
Detachable
Large: 80*48*86cm
Medium: 66*44*86cm
Small: 60*40*86cm



Instrument Trolley

SS-TR01

Stainless
45*35*82-120cm



Instrument Trolley

SS-TR02

Stainless
45*35*82-120cm



Dirty Linen Cart

SS-DL01

80*50*86CM
Square type and
Rectangle type available



Nursing Trolley

Linen Trolley

SS-DL02

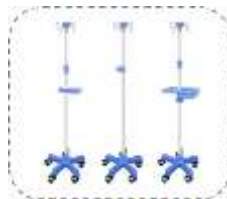
95*45*86cm



IV Stand

SS-IV01

5 feet, with wheels
ABS base
Height adjustable



Examination Bed
SS-EB04

190*60*65cm



Patient Trolley
SS-PT01

Flat type and head lift type available
190*76*60cm



GYN Examination Bed
SS-EB01

Cushion material is high-elastic sponge cushion
186*52*86cm



GYN Examination Bed
SS-EB02

The seat cushion is made of PU cushion
186*60*86cm



GYN Examination Bed
SS-EB03

The seat cushion is made of PU cushion
186*60*86cm



Delivery Bed
SS-DB01

Stainless



Chair
SS-C01

3 feet
Height adjustable



Foot Step
SS-FT01



Steel Table
SS-02

Material: stainless steel
Guide rail type: without damping guide rail
Double-layer 80*40*80 thickened



Sterelization Drum
SS-SD100



Kidney Dish
SS-KD01



Surgical Scrub Sink
SSI-2

304 stainless steel
150*60*180cm
Dual LED light
Sensor faucet



Cylinder Trolley
CT-102

102*76*43 cm



Ward Screen
SS-WS01

4 fold
Detachable
180*200cm



Stainless Steel Cage
SS-C300

Height adjustable, 48-68 cm
3 feet/ 4 feet



Wheel Chair

C-WM01

Product size: cushion width: 45cm
 Block depth: 41cm
 The height of the seat cushion from the ground: 50cm
 Handrest height from the ground: 71cm
 Backrest height: 41cm
 Wheelchair height: 91cm
 Large wheel: 24-inch (60cm) black inflatable tire
 Small wheel: a 7-inch wide wheel
 Bearing capacity: 100kg



Wheel Chair

C-WD01

Lead-acid battery
 Range:25-30kms
 Length 110cm
 Chair width 65cm, car height 95cm
 Seat width 46cm, seat height 45cm
 Backrest height 72cm, armrest width 47cm between hand rail
 Bearing weight:100kg, general motor 250w * 2
 Steel pipe frame, front wheel 10 inch
 ABS material
 Rear wheel 16 inch steel hub inflatable tire
 Pedal height adjustable ,Handle can be foldable



Wheel Chair

C-WD02

Electric wheelchair parameters:
 Front wheel: 9.5-inch X 45PU wheels,
 Rear wheel: 15.7-inch Pu wear-resistant wheels.
 The main frame: thick elliptical tubing
 Armrest: Detachable (Pu armrest pad)
 Footrest: Detachable
 Backrest: Folded up and down. (Patented)
 Motor: 250w×2 high-power motor, intelligent controller, Optional 12AH×2 battery assembly,
 Cruising range : can reach 15~20Km



Wheel Chair

C-WD03

Electric wheelchair parameters
 Foldable and is easy to carry
 Front wheel: 9.5" PU wheels
 Rear wheel: 15.7" Pu wear-resistant wheels.
 The main frame: water printing
 Armrest: Fixed Black leather upholstered armrests
 Footrest: plastic footrest
 Battery:DC24V, 15.8Ah
 Motors:250W



Blood Draw Chair C-B01



Bedside Bench C-B02

186*50*38cm
Brown, black, pink, blue
colours available



Bath Chair C-C01

Height: 90-96cm
Width: 45cm
Maximum bearing weight:
100kg
Aluminium + white abs



Bath Chair C-C02

Bath chair with
double handles
Detachable
backrest and handle
With shower buckle



Hydraulic Shift Chair C-S01

Hydraulic lift
Height adjustable. 42cm-
65cm
Handrail height
adjustable
Width: 58 cm
Maximum bearing weight:
200kg
4 wheels with brake



Hanging Hydraulic Shift Chair C-S02

Hydraulic lift
Overall height: 1200-
1950mm
Hanger height: 750-
1750mm
Maximum bearing weight:
180kg
Lift speed: 3-9mm/s



Dialysis Beds/Chairs C-D11

1510*800*610mm
4 silent wheel
with brakes
With a IV pole
Maximum bearing
weight: 250kg



ENT Chairs C-ENT01

Electric type, with 3
functions.
Foot switch electric
operation

The overall lifting
height is 550-750mm
Break on the back
plate which is greater
than or equal to 90°

Lower leg plate folding is greater than or equal to 80°
The main frame is all metal structure, the cover is
made of stainless steel,
bearing force and durable, can bear 300 kg



Fetal Monitor**FM-800G**

Light dexterous appearance, tops horizontally and walls can be hoisted.
 8.0" screen color LCD display, rotatable screen to 60°.
 Display of the patient data and curve clearly.
 FHR 120 BPM~160BPM normal range label.
 Manual/Auto records fetal movement.
 Sound and color remind users of high and low fetal heart rate.
 Continuous 24-hour real-time monitoring function.
 Continuous 12-hour patient curve and data storage, playback and print.
 With picture lock function.

**Fetal Monitor****FM-L8**

7" LED+LCD display, 90 degree foldable.
 Built-in longtime 110mm thermal printer.
 Super sensitive probe.
 Longtime data storage and printout.
 Rechargeable battery support longtime working.
 DSP technology, real-time identifying and measurement of FHR, accurate and reliable results.
 Automatic fetal movement detection and accounting.

**Fetal Monitor****FM-L8P**

Built-in longtime 50mm thermal printer.
 Super sensitive probe.
 Sensitive probe, DSP technology, accurate and reliable FHR monitoring.
 Longtime data storage and printout.
 Rechargeable battery support longtime working.
 DSP technology, real-time identifying and measurement of FHR, accurate and reliable results.
 Automatic Fetal Movement Detection and Accounting.
 CTG scoring system: Krebs score/Fischer Score.

**Function Features of Fetal Monitor****FM-6018**

10.2" LED touch-screen, 90° rotation screen.
 Twins probe available.
 CTG waveforms can be frozen.
 Thermal printer with 112mm, synchronization print.
 Auto interpretation and NST grade.
 High performance waterproof probe is equipped.
 Up to 500 patients data can be saved, USB can be supported.
 Data transmitting to PC via USB.
 Patient's information can be input.
 Historical data can be reviewed and printed.

**Pro Fetal Monitor****FM-L8M**

10" TFT display, 90 degree foldable.
 Built-in longtime 110mm thermal printer.
 Super sensitive probe.
 Longtime data storage and printout.
 Rechargeable battery support longtime working.
 DSP technology, real-time identifying and measurement of FHR, accurate and reliable results.
 Automatic fetal movement detection and accounting.
 CTG scoring system: Krebs score/Fischer Score.



Fetal Monitor**FM-CH80B**

10 inch touch screen, folding 60 degree.
 12 chips 1MHz digital pulse transducer.
 Twins monitoring function option.
 6 kinds of printing mode, printing width 112mm.
 1200 hours data and waveform storage and review .
 Bluetooth and wireless connection option.

**Fetal / Maternal Monitor****FM-CH80**

7" color LCD screen, clear monitor curve display.
 Automatic fetal movement detection.
 Multi-alarming functions: tachycardia and bradycardia alarm, paper-lack alarm.
 High-capability storage, playback printing function.
 Pregnant woman information input and record.
 Doctor event marked beside the curve with upright character.
 Three-in-one transducer without line winding, compatible with three separate transducers.
 Windows operation system, easy and convenient coding input keyboard,

**Fetal Monitor****FM-T10**

10.2" colorful LED display.
 Flexible, light design, easy operation.
 Flip-Screen from 0 to 90 degree, large font, multi interfaces display.
 Silicone keypad and knob two operating modes.
 Data storage, reviewing, print.
 Simultaneously maternal and fetal parameters display.
 Display modes: standard interface, big font interface
 Monitoring single fetus, twins (Optional).
 Fetus wakeup function (Optional).
 Standard parameters: FHR, TOCO, FM, thermal printer.

**Fetal Monitor****FM-T12**

12.1" colorful LED display
 Flexible, light design, easy operation
 Flip-Screen from 0 to 90 degree, large font, multi interfaces display
 Silicone keypad and knob two operating modes
 Data storage, reviewing, print
 Simultaneously maternal and fetal parameters display
 Display modes: standard interface, big font interface
 Monitoring single fetus, twins (Optional)
 Fetus Wakeup function (Optional)
 Standard parameters: FHR, TOCO, FM, thermal printer

**Infant CPAP****NCPAP-AD1**

Applicable Patients: Premature neonates and infants up to 14 years old
 FiO2: 21%-100%
 Flow Rate: 2-18 LPM
 CPAP Pressure: 3-10 cmH2O
 Noise: <55dB(A)
 Power: AC220V, 50-60Hz (Optional: AC110V, 50-60Hz)
 Gas Source: Air / Oxygen @ 0.3 MPa -0.4 MPa
 Alarm: Gas supply pressure difference >0.1 MPa
 Humidifier: Standard: PN-2000F

● Optional: PN-2000FB, PN-2000FC850



Infant Radiant Warmer**RW-20A**

Electrical requirement: ~ 220V 50Hz, Power consumption: ≤700VA
 Air mode temp range: 25.0°C~37.0°C, Over temp.alarm: <38.0°C
 High mode temp.range: 37.1°C~38.0°C, High mode temp.alarm: <39.0°C
 Temp deviation alarm: ±7.0°C, skin sensor accuracy: ≤0.3°C
 Mattress temp.uniformity: ≤2.0°C, APMGAR timinc: APMGAR timinc
 screen: LED, skin temperature sensor: with
 suction: option, O₂ bottle: option
 phototherapy: no, X-ray tray: option

**Infant Radiant Warmer****RW-100A**

Operating conditions: environment temperature 18°C ~ 30°C
 Environment relative humidity 30% ~ 75%,
 Atmospheric Pressure 700 ~ 1060hpa
 Environment air velocity of flow < 0.3m/s
 Skin Temperature control range: 32°C ~ 38°C
 Skin temperature control accuracy: ≤0.5°C
 Skin temperature sensor accuracy: ±0.3°C, Mattress temperature uniformity: < 2°C
 Warm-up time(from 25°C): < 30min, Distance from heater to mattress: 80cm
 Mattress size: 67cmX54cm

**Infant Radiant Warmer****RW-630**

Heater capacity: 500W, LCD display: 10.4 " LCD touch screen
 Canopy mobility range: horizontal rotation 240° Vertical rotation : ±30°
 Temperature control: servo (baby) mode, manual, preheating mode
 Skin temperature: setting range 34.0°C ~ 38.0°C, Display range: 20.0°C ~ 42.0°C
 Heater output: setting range 0~100% (in 5% increments)
 Indication range 0~100% (in 1% increments)
 Timer: APMGAR mode /CPR mode switchable, APMGAR Beep: 1, 3, 5, 10 min
 CPR beep interval 30s, 0-99minutes 59 seconds (in 1 second increments)
 Examination lighting:power 6W LED (2W X 3)
 LED lamp adjustable illumination intensity 0~1500lux
 Bed tray: Inclination angle (back and forth) ±13°, Mattress surface 500 X 700 X 25mm

**Infant Radiant Warmer****RW-930**

Heater capacity: 500W
 Canopy mobility range: horizontal rotation 240° Vertical rotation: ±30°
 Temperature control: servo (baby) mode, manual, preheating mode
 Skin temperature: setting range 34.0~38.0°C, accuracy±0.3°C
 Display range: 20.0~42.0°C
 Heater output: setting range 0~100% (in 5% increments)
 Indication range: 0~100% (in 1% increments)
 Timer: APMGAR mode, CPR mode switchable, APMGAR beep: 1, 3, 5, 10 min
 Examination lighting: power 6W LED (2W * 3)
 LED lamp adjustable illumination intensity 0~1500lux
 LCD display: 10.4 " LCD touch screen, Pixel: 800 * 600
 Bed tray: Inclination angle (back and forth) : ±13°
 Mattress surface: 500 * 700 * 25mm
 Mattress surface to ground height (standard): 90cm
 Guard door: damping system, Cable access hole: 3



Infant Incubator**BIN-01**

Air temp servo-controlled by computer, air mode temp. range: 25.0°C ~ 37.0°C.
 Various and self-check alarms.
 Removable humidity reservoir, easy to clean.
 With the transfusion shelf and tray.
 Electrical requirement: ~ 220V 50Hz
 Power consumption: ≤ 450VA
 Air over temp. range: < 38.0°C
 Air mode alarm: ±3.0°C
 Air control accuracy: ≤ 0.5°C
 Mattress temp. uniformity: ≤ 0.8°C
 Noise: ≤ 55dB(A)

**Infant Incubator****BIN-100**

Microprocessor based servo controlled temperature system.
 Control modes: air mode
 Humidity is adjustable in two levels
 Operating condition: environment temperature 20°C~30°C
 Environment relative humidity 30%~75%, environment air velocity of flow <0.3m/s
 Air temperature control range: 25°C~37°C, 37.1°C~38°C
 Temperature fluctuation: ±0.5°C, Uniformity of mattress temperature: <0.8°C
 Warm-up time(from 25°C): <30min, Internal noise level: <50dB(A)
 Infant bed tilt angle: ±10°, mattress size: 65cm(L)*37cm(W)
 Trough capacity: 1200mL, air filter: 0.5µm

**Infant Incubator****BIN-200**

Operating condition: environment temperature: 20°C~30°C
 Environment relative humidity 30% ~ 75%, environment air velocity of flow <0.3m/s.
 Air temperature control range: 25°C~37°C 37.1°C~38°C
 Skin temperature control range: 32°C~37°C 37.1°C~38°C
 Skin temperature sensor accuracy: ±0.2°C, temperature fluctuation: ±0.5°C.
 Uniformity of mattress temperature: ≤0.8°C, warm-up time(from 25°C): <30min.
 Internal noise level: <55dB(A), Infant bed tilt angle: ±12°.
 Mattress size: 65cm(L)*37cm(W) trough capacity: 1000mL, Air filter: 0.5µm

**Infant Incubator****BIN-2000**

8 inch LCD screen.
 Temperature control modes: skin and air temperature servo control mode.
 Air mode control temperature range: 20°C-37°C
 Air mode control override temperature range: 37°C-39°C
 Skin mode control temperature range: 34°C-37°C
 Skin mode control override temperature range: 37°C-38°C
 Air flow velocity across mattress: < 10 cm/sec
 Temperature rise time at 22 °C (72 °F) ambient: <35min (From 22°C, 50% RH, to 33°C)
 Temperature variability: < 0.3°C
 Operating noise level in hood: ≤47dB(A)
 Humidity control range: 30% - 95% RH, Humidity control reservoir capacity: 1500ml
 Humidity display and control accuracy: ±3%RH



Infant Incubator**BIN-3000**

Temperature control modes: Skin and air temperature servo control mode
 Air mode control temperature range: 20°C-37°C
 Air mode control override temperature range: 37°C-39°C
 Skin mode control temperature range: 34°C-37°C
 Skin mode control override temperature range: 37°C-38°C
 Skin temperature accuracy: $\pm 0.3^{\circ}\text{C}$
 Dual-skin temperature monitoring: Yes
 Air flow velocity across mattress: $< 10\text{cm/sec}$
 Temperature set time at 22°C(72°F) ambient: $< 40\text{min}$ (From 22°C, 50%RH, to 35°C)
 Temperature variability: $< 0.5^{\circ}\text{C}$
 Operating noise level in hood: $\leq 47\text{dBa}$
 Carbon dioxide(CO₂) Level: $< 0.5\%$

**Infant Incubator****BIN-100T**

Air mode and Baby mode controlled by micro-computer
 Use AC Power and DC Power alternatively, DC 12V or DC 24V
 Self-testing function, multi audible and visual alarm function
 Double wall hood with 4 operating windows, 1 iris ports and 6 infusion seals
 The infant bed can be pulled out from side door easily
 Natural air flow humidity
 Oxygen supply system
 LED observe light, adjustable brightness
 Optional: Ambulance type trolley, humidity display, oxygen concentration control, SpO₂

**Infant Phototherapy Unit****PT-50**

LED bulbs as phototherapy radiant source
 Irradiance intensity is adjustable in 3 grades: low, medium, high
 LCD screen display therapy time and integral time separately
 Count up timer and countdown timer for exact and convenient treatment
 Equal light distribution, high intensity
 The angle of head and height are adjustable
 Using together with infant incubators, infant warmers, baby cradle

**Infant Phototherapy Unit****PT-300**

3.5" LCD TFT Color Touch screen
 16 Blue Super LED and 4 White LED
 Light Intensity in level 157 $4\text{w/cm}^2/\text{nm}$ at distance 35cm
 49 $4\text{w/cm}^2/\text{nm}$ at distance 40cm
 36 $4\text{w/cm}^2/\text{nm}$ at distance 50cm
 Wavelength Range 400-550nm (440-460nm peak)
 Life-time of the Lamps with 50,000 Hours
 Adjustable Irradiance Intensity I, II, III
 0-999h treatment timer and 48h Down-Counter

**Infant Phototherapy Unit****PT-360**

LED blue bulbs as the radiant source, irradiating uniformly
 360° phototherapy radiant more effective
 Three phototherapy modes: Up side phototherapy and Down side phototherapy can be used separately, also can be used together
 Therapy time of up and down side phototherapy units, air temperature, skin temperature are displayed separately
 Automatically record each therapy time and total therapy time
 Power off memory, alarm silence key, locking key and self-test function
 Four alarm functions: power failure, probe failure, over temperature, fan failure
 Air spring structure make the hood open and close easily
 The aluminum alloy is applied on the base, with 2 drawers and 1 tray



Transcutaneous Jaundice Detector**JM-10**

Accurate test, instant and safe test, LCD display for convenient observation.
Streamline design, smart and delicate, comfortable to hold.
Long service life, low energy consumption.
Battery indicator clews battery power information.
Timely prompts battery replacement.
Instant test result reading, providing serum bilirubin concentration.
Storage and memory function, Browse and delete function.

**Transcutaneous Jaundice Detector****JM-20**

Measuring method: light reflection,
Light source: Xenon flash,
Display: LCD
Measuring range: 0.0~29.9mg/dl(0.0~425 μ mol/L)
Indication error: 00~15 \pm 1(mg/dl), 16~25 \pm 1.5(mg/dl)
Measuring accuracy:RSD<2%, Measuring units: mg/dl, μ mol/L
Battery: 4 triple A rechargeable nickel-metal hydride batteries
Measuring times: 800 times after each full charge, Measuring averages: 2~5 sets
Calibration plate: white screen 00.0 or 00.1mg/dl, yellow screen 20.0 \pm 1 mg/dl

**Transcutaneous Jaundice Detector****JM-30**

Measurement light reflective
Light source: LED
Display: LCD.
Indication error: 0~25mg/dL \pm 1.0mg/dL
Power: Lithium battery(DC3.6V, 1000mAh \pm 20%)
Calibrate screen: white end face is 0, the yellow end face 16.0 \pm 1.0
Data storage: can storage 200 measuring date

**Colposcope Digital Imaging System****CPS-2200**

Camera: 1/4 inch Sony CCD, 0.8 million effective pixels, 18 times Optical zoom, Horizontal resolution 700 LINE.
Adopt 24 groups of energy-saving and eco-friendly white LEDlight source, with high brightness, long life, uniform illumination,
High Colorrendering index, do not produce heat etc. Hand-held zoom button, convenient for doctors to observe pathological changes at the same time.
Control handle: Adopt Palm-type handle design, humanized operation panel,
Silicone button Ovalayout, can realize zoom, focus, imaging mode, acetic acid timing, image marking, brightness adjustment and other functions with single hand.

**Colposcope Digital Imaging System****CPS-2200A**

Camera: Adopt 1/2.8 inch Sony CCD, 20 times Optical zoom, 2.1 million effective pixels, providesthe doctor high-quality, high-resolution Images.
Advanced spot subtraction imagingtechnology to reduce the light spot caused by the phenomenon of reflection.
Hand-held zoom button, convenient for doctors to observe pathological changes at the same time.
Flexible positioning of the swing arm bracket.



Water Bath

YN-02

- Digital temperature control
- 2 holes
- Temperature range: room temperature to 100°C
- Volume: 7L
- Power: 600W
- Temperature precision: $\pm 0.5^{\circ}\text{C}$



Water Distiller

WD5L

- 5L/H
- 4.5KW



Water Distiller

WD10L

- 10L/H
- 7.5KW



Water Bath

EK-WB420

- 420*180*120
- Digital interface
- Automatic temperature control



Plasma Sterilizer

PLS-1000



Microscope

CX23

- OLYMPUS



Microscope

MIC-102B

Sliding Binocular Head/Sliding Trinocular Head, Inclined at 45°, Interpupillary 55-75mm

- Eyepiece: WF10×18mm
- Objective Achromatic Objective: 4×, 10×, 40×, 100×
- Nosepiece Quadruple Nosepiece
- Stage Double Layers Mechanical Stage 120X115mm/ 70X30mm
- Condense Abbe Condenser N.A. 1.25 with Iris Diaphragm & Filter



Operation Microscope

OM-10P

- Eyepiece: 10X/12.5X Aif wide-angle eyepiece
- Observe the slope: 45° Pupil distance: 55mm -76mm, continuously adjustable
- Diopter adjustment: +7D (binocular)
- Magnification: 4X -20X manual continuous non-polar doubling
- Vision: 10.5 mm -60 mm
- Working distance: >180mm 1 :8 large variable ratio



LED Binocular Microscope

MC-103LED

Observation head: hinge type binocular observation head, 30° inclined, pupil distance 55-75mm
 Magnification: 40X-1000X, Eyepiece: 10X wide-angle eyepiece
 Object lens: 185mm achromatic object lens 4X, 10X/, 40X (ball), 100X (ball, oil).
 Focusing mechanism: coarse and fine adjustment coaxial structure, coarse adjustment range of 15mm, fine adjustment value of 0.004mm.
 Object lens converter: four-hole conversion mechanism.



Video Biological Microscope

MC-102T

Viewing Head: Seidentopf Binocular Head eyepiece: WF10x
 Objective: Achromatic Objective: 4x, 10x, 40x, 100x
 Nosepiece: Triple Nosepiece
 Stage: Plain Stage with Slide Clips 110X120mm/60X30mm
 Illumination: LED lumination, Brightness Adjustable



Biological Microscope

MC-107BN

Eyepiece: WF 10X/18mm
 Objective: chromatic 4X, 10X, 40X (S), 100X (S.OIL)
 Viewing Head: Binocular Head, Inclined 45°, Rotatable 360°, Interpupillary arm Distance: 55-75mm
 Nosepiece: Quadruple
 Mechanical Stage: Double Layer Mechanical Stage, Size: 140x140mm, Moving range: 75x50mm
 Condenser: Abbe Condenser N.A1.25 with Iris Diaphragm
 Illumination: 6V/20W Halogen Lamp



Chemiluminescence Immunoassay Analyzer

IMA-G10

Test Items: Thyroid Markers, Hormones, Bone Metabolism, Bone Metabolism, Tumor Markers, Infectious Disease, Diabetes, Cardiovascular Markers, Hypertension, Inflammatory Markers,

Compact Design: Bench top design: Relatively lighter weight: 80 kg
 High Efficiency: Throughput: up to 200 T/H, Time for the first result: 12 min

Reliable Accuracy: Direct chemiluminescence methodology, less interference, 3-step washing procedure, prevent contamination, 3-step magnetic separation system

Highly Intelligent: 12" LCD full touch screen, user-friendly operating interface. Intelligent software system: real-time monitoring of reaction status, consumables and reagent information



Electrophoresis Machine

EPM-300

Output direct voltage: 0~100V~200V~300V three range running adjustable.

Output direct current: 0~100mA.

Stability: $\pm 1.5\%$. (This are the variable ranges of the output voltage as the power voltage variable ranges are 220V $\pm 22\%$ or the output current variable ranges are 0~100mA.)

Ripple voltage: <50mV.

Operating time: Can be working 8 hours continuously if the output current is 100mA.

Usage condition Environment temperature: 0~40°C, humidity: $\leq 80\%$.

Usage power: 220V, 50Hz.

Consume power: About 60VA.



Table Top Autoclave

AT-T01

Volume: 18L
 Electrical supply: 220-240 VAC
 Chamber(mm, diameter*depth): 230x360 mm
 Power(VA): 1100 VAC
 Sterilization temperature (°C): 121°C
 Overall dimensions (mm): 605 (width)x445(height)x400(depth)
 Net weight (kg): 30 kg



Table Top Autoclave

AT-T03

Sterilizing chamber volume: 250×420mm
 Working pressure: 0.22M Pa
 Working temperature: 134°C, Temperature adjust range: 105~134°C
 Timer range: 0~60min
 Indicator light indicates working state
 For 4~6 minutes rapidly sterilizing.
 Sterilizing temperature and time can be preset
 Steam-water inner circulation system:no steam discharge, and the environment for sterilizing will be clean and dry



Table Top Autoclave

ATC-T02

Volume: 18L
 Voltage 110V/220V,60Hz/50Hz
 Design pressure: 0.25MPa
 Design temperature: 139°C
 Chamber volume: 250×370
 Outer dimension: 500×400×350
 Packingsize(LxWxH)540×450×390
 Gross/net weight: 26/24kg



Table Top Autoclave

ATC-SQ04

Product form: Desktop
 Heating method: Electric heating
 Power: 1.7KW, AC220V, 50Hz
 Dimensions(Length × Width × Height): 720 × 513 × 425mm
 Liner size (Diameter × Depth): 246 × 450mm
 Effective Volume: 23L, Weight: 49kg
 Material of sterilization room: The sterilization room is made of 304 anti-corrosion stainless steel
 Outer box material: ABS material
 Highest anti-stress value: -90kpa ~ 260kpa
 Temperature during sterilization: 121 °C -134 °C



Portable Sterilizer

POT-02

Volume: 18L
 Working temperature: 126°C
 Working pressure: 0.142M Pa
 Weight: 14 kgs



Autoclave

POT-01

18L Sterilizer
8L, 12L, 18L, 20L, 24L available



Vertical Pressure Steam Sterilizer

VS-50L

Chamber volume: 50L ($\phi 340 \times 550$) mm
Working pressure: 0.22M Pa
Working temperature: 134°C
Timer range: 0~60min
Transport dimension: 610×610×1120(mm)



Horizontal Pressure Steam Sterilizer

PZ12

Working pressure: 0.22M Pa
Working temperature: 134°C
Timer range: 0~99min
Automatically controlled the sterilizing process, easy to operate
With drying function, suitable for the medical dressing drying
With over-temperature, over-pressure auto-protect
The door can not be open until the pressure in the chamber is reduced to 0.027MPa



Vertical Sterilizer

VS-100L

Fully stainless steel structure
Indicator light indicates working state
Over temperature&over pressure auto-protection
Double scale indication pressure gauge
Safe protection of water lacking
Automatically shut off with beep reminding after sterilization
Easy to operate, safe and reliable
With two stainless steel sterilizing baskets
50L($\phi 340 \times 550$) mm



Vertical Sterilizer

VS-150L

150L autoclave



Combined Refrigerator & Freezer**RF-300L**

2 ~ 8°C /-10 ~ -26°C Combined Refrigerator & Freezer
 Cabinet Type: Upright
 Capacity(L): 300, R: 197, F: 103
 Internal Size(W*D*H)mm: R:600*510*657,F: 500*460*535
 External Size(W*D*H)mm: 700*640*1876
 Temperature Range: R:2~8, F: -10~-26
 Ambient Temperature: 16-32
 Cooling Performance: R: 5, F: -26

**Refrigerator****REF-108L**

3 pcs shelves, 108L capacity
 Refrigeration/g: R600a,CFC free, 27g
 Ambient temp: 10-32°C
 Temp range: 5+3°C
 Temp accuracy: 0.1°C
 Evaporator: copper tube and aluminum fin
 Condenser: Bundy tube
 Sensor: NTC

**Freezer****FRE-100L**

No Coding
 1.7-inch large screen
 256 data storage memory
 7 days 14 days, 28 days average
 GDH enzyme test strip
 0.8uL blood sample
 The range of HCT test can reach 20 ~ 70% of the red cell pressure of whole venous blood

**Platlet Agtiator Incubator****SP10**

Temp range: 22.0°C±2.0°C
 Oscillation frequency: 60.0rpm±5.0rpm
 Temp uniformity: ±2.0°C
 Fluctuation: +1.0°C
 Resolution: 0.1°C
 Amplitude: 50.0mm±5.0mm
 Refrigerant: R134a, CFC free
 External Size: 645*730*1225mm

**Blood Carrier****PZ12**

Capacity: 12L, 12 bags, of 200ml
 Temp control range: 4±2°C
 Heating power: 80W
 Cooling power: 80W



Rolling Mixer

BK-RX6

Rocking and Rolling modes for good mixing
 LCD displays running speed and timing time
 Electronic setting speed and timing time, more correct control
 Adjustable speed, maximum speed up to 100rpm
 Six roller design, suitable for a variety of sample tubes
 Timed or continuous operation mode



Serum Sample Shaker

SK-O10

Shaking motion: orbital
 Orbital diameter: 10mm
 Time range: 1min~99h59min
 Speed range: 50-300rpm
 Capacity:
 PP-1 tray: 8pcs petri dishes
 PP-2 tray: 6*100ml or 4*250ml conical flask
 PP-3 tray: 12*100ml or 6*250ml conical flask



Rotating Mixer

RM-B1

LCD display of speed and time(MX-RD-Pro).
 Adjustable mixing angle from 0 to 90°(MX-RD-Pro).
 Material of the plate: Stainless steel with oxidation coating (MX-RD-E)
 Stainless Steel (MX-RD-Pro).
 Material of the clip: Plastic (MX-RD-E), Stainless Steel (MX-RD-Pro)
 Speed range from 10 to 70rpm(MX-RD-Pro).
 Adjustable speed range from 0 to 80rpm(MX-RD-E). A wide variety of accessories are available



Magnetic Stirrer

MS-20L

Positive and negative stirring setting available for mixture more uniform
 Glass-ceramics control panel with scratch-proof, corrosion resistance and easy for cleaning
 The plate covered white ceramic with excellent corrosion resistance and keep it safety.
 (180X180mm) large dimension suitable for 5cm stir bar.
 The special electrical insulation composite material provide the excellent heating performance and the surface of hot plate can reach temperature up to 380°C.
 LCD backlid display which can be show the setting temperature and actual temperature.
 Use the large Alnico material which can be provide the powerful magnetic force, it can be prevented the high temperature demagnetization and stir bar decoupling.
 With safety LED warning, indicating the heating function start, digital feedback controller, with micro reversing switch (turn + press)



Pipettes

Light weight and ergonomic design to ensure a better sense of use.
 Digital display, easy to read data.
 The pipettes cover volume range of 0.5ul to 1ml.
 Easy to calibrate and maintain.
 The low part can be autoclaved without affecting performance and comfort.
 Manufactured from innovative materials.



Incubator Microbiology

54BK

Capacity: 54L
 Temperature Control Method: PT100
 Temperature Range: RT+5~85°C
 Temperature Stability: $\pm 0.5^{\circ}\text{C}$ (at 37°C)
 Temperature Uniformity: $\pm 1^{\circ}\text{C}$ (at 37°C)



Biosafety Cabinet

BBC-86

Small dimension, save space.
 Centrifugal fan, speed adjustable; H14 HEPA filter.
 Motorized front window: The front window is motorized for convenient, one-hand operation.
 Audio and visual alarm: Abnormal airflow velocity, Filter replacement, Front window at unsafe height, High filter pressure alarm.
 Time reserve function: This can save 30 minutes waiting time after activating the cabinet and the sterilization time after experiment.
 Remote control: Each function can be realized 6 meters away from the cabinet by remote control, which can protect the operator under emergency.



Sealing Machine & Sealer for Lab

SEM-100

Auto-control function, continuous operation, substitution of manual sealing machine;
 Microcomputer Temperature controller, accuracy $\pm 1\%$, working temperature range 60~220°C;
 Fast heating, 40 seconds required from room temperature to 180°C;
 Adjustable fixed-force system, suitable for sealing paper-plastic bags, 3D paper-plastic bags and paper-paper bags;
 Advanced flat ceramic heating components, high-temperature stability, long life expectancy and high heat efficiency



Weighing Blood Collection

BC-4

Measuring Range: 400ml
 Resolution: 2ml
 Liquid Proportion: 1.05g/ml
 Collection Speed: 0.5-3ml/s
 Static Error: $\pm 2\text{g}$
 Swing Frequency: 30r/min
 Ambient Temperature: 5°C~40°C
 Battery: Lithium battery, 12V, 5000mAh, 3 hours of battery life



Centrifuge

TD5A

Model TD5A
 Max Speed 5500r/min
 Max RCF 5310×g
 Max Capacity 2000ml
 Speed Accuracy ±20r/min
 Time Range 0-999min/sec
 Power Supply AC 220V 50Hz or 110V 60Hz, 15A



Refrigerated Centrifuge Machine for Lab

TL6CR

Max.Speed: 6000rpm
 Speed Accuracy: ±10 rpm
 Max.RCF:4387xg
 Max. Volume: 4*500m
 Refrigeration System:CFC-free compressor, R404a
 Timing Range:1s-99min59s/Continuous/Short-span
 Temp. Range: -20°C~+40°C
 Temp.Accuracy:±1°C
 Noise: ≤65dB



Hematocrit Centrifuge

TL04A

Adopts micro brushless motor, free-maintenance, no powder pollution, micro-computer control, LCD displays the time and speed, programmable speed and time.
 Electric lid lock, easy and reliable.
 Over-speed and imbalance protection.
 Frame is 3 tires protection steel jacket, with stainless steel chamber.
 Can switch between RPM and RCF.
 Max Speed 12000r/min
 Max Volume 24pcs Capillary
 Timer 0~99min59s
 Speed Accuracy ±20r/min
 Max RCF 15800×g



Centrifuge

TL04

Max capacity: 4*100ml, Max speed: 4000rpm
 Max RCF: 2250xg
 Timing range: 1~99min
 Speed precision: ±10rpm
 Noise:≤65dB, Consumption: 150W
 Power supply: AC110/220V 50/60Hz
 External size(L*W*H) mm: 430*340*278
 Package size(L*W*H)mm: 456*546*456
 Gross weight(kg): 24, Net Weight(kg):18



Mini Centrifuge

CTF-D10

Speed range from 300-5000rpm;
 Rotor speed can be set and displayed by RPM or G-force;
 Defined program by knob will be stored and activated when power on;
 Two programs P1/P2, easy to start the procedure by one key;
 Two deceleration speeds setting to meet different requirements;
 Easy-to-read processing display and sound alert;
 Automatic lid-lock release after running;
 Maintenance-free brushless DC motor.



High Temperature Drying Oven**DO-YH01**

304 stainless steel, mirror polishing processing, semicircular arcs at corners easy to clean and maintain. The space between the shelves in the chamber is adjustable, PID controller with over temperature alarm and timing function ensures precise and reliable control.

Ceramic fiber door seal, which can run at high temperature for a long time and has a long service life.

Programmable controller: 7 periods 63 steps, 0 ~5999mins for each period, can preset boot and shutdown time, adjustable circulating fan.

Independent over-temperature alarm system ensures experiments running safely

**Hematology Analyzer****CBC-03**

3-part differentiation of WBC, 23 parameters, single channel counter, up to 35 samples test per hour

Volume measurement by time, not wrong warning

Advanced valve technology, long life

RS232 interface, PC connecting

Electrical resistance for counting and SFT method of hemoglobin

Low sample consumption: venous 9.8 ul, capillary 9.8 ul, pre-diluted 20 ul for twice testing one time

**Hematology Analyzer****CBC-05**

5-part differentiation of WBC, 29 parameters, double channel counter

14 inch premium large color touch screen

SMARr-FLOW fluidic patent technology

Compact design with reagents on board, save the valuable bench space of small labs

Accurate measurement for low value PLT with advanced sweep-flow technology

Low volume sample consumption CBC+DIFF

Mode: s20u.CBC mode: s10ul

Low running cost

Easy to operate

**Hematology Analyzer****EH8300**

3 part, 2 channels, 21 parameters



Biochemistry Analyzer

EC9003

Semi auto chemistry analyzer
 Test method: Flow cell & cuvette
 Test mode: 1 point end, 2 point end, Kinetics, Fixed-time, Turbidimetry
 Lamp house: Long-life tungsten halogen lamp, auto-sleep function.
 Resolution: 0.0001 Abs.
 Photometric range: 0.0000-4.0000 Abs.



Biochemistry Analyzer

EC9003B

Semi auto chemistry analyzer
 Incubator: Multifunctional incubator
 Test method: Flow cell & cuvette
 Test mode: 1 point end, 2 point end, Kinetics, Fixed-time, Turbidimetry
 Optics: 8 standard wavelengths: 340nm, 405nm, 450nm, 510nm, 546nm, 578nm, 600nm, 630nm. 2 more for optional.
 Lamp house: Long-life tungsten halogen lamp, auto-sleep function.
 Temperature: 25, 30, 37°C and Room temperature.
 Flow cell capacity & optical path: 32ul, 10mm.
 Resolution: 0.0001 Abs.
 Photometric range: 0.0000-4.0000 Abs.



Semi Auto Biochemistry Analyzer

CHA-02

Absorbency range: -0.33.0Abs
 Resolution: 0.001Abs(display), 0.0001 abs(internal calculation)
 Light source: halogen lamp
 Wavelength: 340, 405, 510, 546, 578, 620nm+ 2 free positions
 Stability: <0.005A/30min Half-bandwidth: <12 nm
 Temperature control: room temperature, 25°C, 30°C, 37°C
 Temperature accuracy: ±0.1°C
 Colorimetric cell: 30ul quartz flow cell
 Sample volume: 0~6000ul Cross contamination: <1.0%



Full Auto Biochemistry Analyzer

BBA-300

Constant Test Speed of 300 T/h
 Emergency samples in test priority at any time
 LS bi-directional connectivity
 Automatic test report printing
 45 sample positions, 90 reagent positions
 Built-in refrigeration system, continual 24-hour on-board cooling
 Built-in barcode reader for reagents and samples (optional item)



Full Auto Biochemistry Analyzer

BCA-200

Throughput: 200 Tests/hour
 Analysis method: end-point, fixed-time, rate(kinetic)
 Sample positions: 37 sample positions
 Reagent positions: 28 reagent positions
 Sample volume: 2-70ul
 Reagent volume: 20~350ul



Full Auto Biochemistry Analyzer

EK-JD300

- Constant Test Speed of 300 T/h
- Emergency samples in test priority at any time
- LIS bi-directional connectivity
- Automatic test report printing
- Highly-polished probe
- Automatic inside and outside probe washing reducing cross contamination
- Highly sensitive liquid level detection sensor
- Actively monitoring reagent volume
- Protection of probe collision
- Auto adjustment of sampling depth of sample probe



Spectrophotometer

SPM-01

- Sample compartment for 5-50mm cuvettes
- Precise automatic T/A changeover
- Automatic zero and full scale adjustment
- Direct concentration read-out and concentration factor setting function
- Equipped with RS232 port & USB port



Electrolyte Machine

ELM-01

- Sample: serum, plasma, whole blood and dilute urine
- Analysis method: ion selective electrode (ISE)
- Measuring time: <30s
- Sample position: 39 positions (including 5 emergency and 4 functional positions)
- Storage: up to 10000 test results
- Printer: internal thermal printer
- Interface: RS232 port



Automatic ESR Analyzer

ESR20

- Application: erythrocyte sedimentation rate analysis
- Measurement method: infrared detection
- Analysis Result: westergren ESR value (mm/hour)
- Throughput: maximum 40 tests/hour
- Analysis channels: 20 (load up to 20 samples for analysis at the same time)



POCT Immunoassay Analyzer

PO-500

- Compact, easy to carry, can be connected to the code scanner, and can be connected to the LIS/HIS system

- The test results are automatically printed, and an external printer can also be connected through a computer

- Sample types: Serum, plasma, whole blood and urine
- Sample instant test can be performed at any time, with random sample insertion function

- Supports multiple items in one card, and the detection time can reach 8 seconds/test

- Appearance design integration, 7-inch color touch screen



Hba1c Analyzer

AC6601

Testing Method: Chromatography/ion-exchange liquid chromatography
 Testing Item: Glycated hemoglobin HbA1c
 Testing Scope: 3%-18%
 Testing Parameters: Precision (CV)<3%
 Testing Time: 4 minutes (including reporting)
 Sample type: Venous blood (EDTA anticoagulation), Peripheral finger blood



Automated ELISA Immunoassay Analyzer

B1000

Software Module: User-friendly Windows system; LIS system available.
 Software Module User-friendly Windows system; LIS system available.
 Sample & Reagent & Dilution Rack Module Original sample tubes available; Rack positions programmable.
 Microplate Reader & Washer Module Modularized automatic control reading and washing system.
 1 robotic arm, 1 pipetting probe (10~1000µl)
 2 unit 96 well microplates (independent incubating)
 1 unit reader & washer (auto reading and washing)



Automated Coagulation Analyzer

COA-1000

Analysis Method: Coagulation method, Analysis Items: PT, APTT, TT, FIB
 Optical coagulation testing theory, PT derived FIB function.
 With automatic and manual dual-mode test functions.
 Use tilt reagent position, avoid wasting.
 With LED lighting function.
 Sampling probe with liquid level sensor and constant heating function, avoid cross-contamination.



Automated Coagulation Analyzer

COA-1000

Supporting Items
 PT, APTT, TT, FIB, II, V, VI, , IX, X, XI, XII, APCR, LA1, LA2; D-dimer, FDP,
 SFMC, VWF; AT-II, PC, PS, HEP, PLG, a2-AP, t-PA, PAI, TM;
 Methodology Clot, chromogenic and immunoturbidimetric principles
 Throughput: 200 T/H
 Analysis Wave lengths: 405 nm, 575 nm, 660 nm, 800 nm
 Sample Positions: 20. Reagent Positions: 20
 STAT Position: Available in random positions
 Calibration Curves: Automatic diluting; multi-point calibration curves (switchable between different types of curves)



ABG Machine

ABG-100

Blood gas & electrolyte analyzer
 • 10.4" TFT touch screen, infrared human detector
 Auto QC cartridge, Easy to use, fast data input, friendly operation interface
 Cost-saving standby mode, rich data management
 Flexible and simple calibrants cartridge
 Sample: whole blood, serum, plasma, dialysate, CSF
 Input parameters: patient temperature, hemoglobin, FIO2, B.P.
 Analysis time: <90s
 Sample volume: 95µl (whole blood), 35µl (capillary blood)
 Calibration: automatic, programmable, one-point and two-point
 Data storage: more than 10,000 results



Microplate Reader

SK201

Windows operation interface, figure button, mouse operation, touch screen.

96-well plate, multiple tests in the single plate.

Arrangement of Test item in micro-plate can be store and re-use

Parameter can be modified and stored

Plate shaking, speed and time adjustable

Open system, test item and parameters can be added or modified.

Large storage for 1000 test item and 1000000 results

10.4 inch color touch LCD

Printing comprehensive report, include hospital and patient information and test results

Built-in portable computer, easy to use.



Microplate Washer

SK200A

Detachable enzyme plate tray facilitates cleaning and disinfection of the tray

Built-in 500 sets of plate washing programs to meet a variety of plate washing requirements

Alarm when waste liquid is full, washing liquid and distilled water are insufficient.

Equipped with microplate bottom rinsing and two-point aspiration functions

Five positions of the cleaning head are programmable and adjustable, suitable for various plate types

Soaking and shaking plate functions: soaking and shaking plate time are adjustable

Double filtration of the lotion and automatic pipeline flushing prevent the formation of crystals on the injection needle and ensure effective prevention of clogging.

The lotion needle and injection needle are designed independently and are not easy to clog.

Built-in working pump, small footprint



ELISA Microplate Reader

BEL10C

10.1-inch large touch screen operation.

High precision and accurate results.

Software: Single wavelength and double wavelengths detection methods.

Measurement Channel: Vertical 8 optical channels

Plate Type: 96-well microplate

Wavelength Range: 400-750nm

Linear Range: 0.000~3.000Abs

Reading Range: 0.000-4.000Abs

Resolution: 0.0001Abs

Repeatability: CV≤0.2%



Urine Analyzer

URI-01S

Principle: photoelectric colorimetry

Throughput: 60 tests/hour

Screen: 4.3-inch touch screen

Memory: Can store more than 2000 test reports

Printer: built-in thermal printer

Interface: USB, RS232, LIS proposal

Range of application: 9, 10, 11, 14 test strip



Oxygen Concentrator Model**OC-3L**

HD large screen for comfortable view.
 High flow rate oxygen supply.
 24 hours 7 days continuous stable performance.
 Power: AC 220V-50HZorAC 110V-60HZ
 Flow rate: 0.5-3L/min
 Outlet pressure: G-10P1(0.04-0.07MPa)
 Oxygen concentration: 93%(±3%)
 Sound level: ≤45dB

**Homecare Oxygen Concentrator****OC-5A**

Flow rate: 0-3LPM/0-5LPM
 Purity: 93%(±3%)
 Outlet pressure: 0.04-0.07MPa(6-10PSI)
 Sound level: <38db
 Power consumption: <300w/≤350w
 LCD display

**Medical Oxygen Concentrator****OC-5B**

Flow rate: 0-5LPM/0-8LPM/0-10LPM
 Purity: 93%(±3%)
 Outlet pressure: 0.04-0.07MPa(6-10PSI)
 Sound level: <50db
 Power consumption: ≤550w/≤550w/≤880w
 LCD display

**Medical Oxygen Concentrator****OC-5C**

2.8 inch LCD numeric key button.
 Numeric setting key for user friendly and easy operation.
 Open system to match different brands of I.V sets.
 One-button night mode design for patient better rest at night.
 Dynamic pressure detection, more intelligent more safer.
 Drug library and event log 2000+ and can be customized.
 Multiple infusion modes of rate mode: rate-time mode, rate volume mode, Body weight mode, Drug library mode.



Medical Oxygen Concentrator **OC-10L**

Flow rate: 0-5LPM/0-8LPM/0-10LPM
 Purity: 93%(±3%)
 Outlet pressure: 0.04-0.07MPA(6-10PSI)
 Sound level: <50db
 Power consumption: ≤550w/≤550w/≤880w
 LCD display



Medical Oxygen Concentrator **OC-10LD**

Flow rate: 0-5LPM/0-8LPM/0-10LPM
 Purity: 93%(±3%)
 Outlet pressure: 0.04-0.07MPA(6-10PSI)
 Sound level: <50db
 Power consumption: ≤550w/≤550w/≤880w
 LCD display



Spirometer **SP-80B**

Display mode:2.8"LCD
 Volume range:0~10 L
 Volume accuracy:±3%or±0.05L
 Flow range:0 L/s~16 L/s
 Flow accuracy:±5%or±0.2L/s
 Working current:200 mA
 Power supply:rechargeable lithium battery
 Safety class:internally powered equipment,type BF applied part



Spirometer **SP-100B**

Display mode:10.1"color LCD
 Display resolution:1280*800
 Volume range:0 L~10 L(BTPS)
 Volume accuracy:±3%or±0.05L
 Flow range:0 L/s~16 L/s(BTPS)
 Flow accuracy:±5%or±0.17L/s
 Power consumption:P≤150V·A
 Power supply:DC 14.8 V rechargeable lithium battery or AC220V 50Hz
 Safety class:class I or internally powered equipment,type BF applied part



Spirometer **SP-100A**

Display mode:10.1"color LCD
 Display resolution:1280*800
 Volume range:0 L~10 L(BTPS)
 Volume accuracy:±3%or±0.05L
 Flow range: 0L/s~16L/s(BTPS)
 Flow accuracy:±5%or±0.17L/s
 Power consumption:P≤50 V·A
 Power supply:DC 7.4V rechargeable lithium battery or power adapter(AC220V 50Hz)
 Safety class:class I or internally powered equipment,type BF applied part



Pedal Suction Unit

SUM001

- Max vacuum: ≥ 0.08 MPa
- Fall of vacuum when sealed: ≤ 0.005 MPa/10min
- Liquid holder: 1000 ml
- Treadle force: ≤ 245 N



Portable Phlegm Suction Unit

SUM-15

Ultimate negative pressure value: 20.075MPa
 Air exhausting speed: ≥ 15 L/min(SX-1A) ≥ 18 L/min (SS-6A)
 Power supply: AC220V ± 22 V/110V ± 11 V,50/60Hz ± 1 Hz
 Regulating scope of negative pressure: 0.02MPa ~maximum
 Reservoir: ≥ 1000 mL, 1pc
 Input power:90VA
 Noise: ≤ 65 dB(A)
 Suction pump:piston pump



Electric Suction Unit

SUM-25

Suction pump:piston pum
 Ultimate negative pressure value:20.09MPa
 Regulating scope of negative pressure:0.02MPa ~ultimate negative pressure value.
 Reservoir:22500 mL/pc,2pcs in the suction unit.



Electric Suction Unit

SUM-35

Power voltage:AC220V $\pm 10\%$ 50Hz
 Air pumping efficiency: first level: ≥ 35 L/min second level: ≥ 15 L/min
 Range of negative pressure:0.013MPa ~ 0.09Mpa(680mmHg)
 Suction liquid vessel: 500ml x 2(glass bottle)
 Gas vessel: 2500ml x 2(glass bottle)
 Noise: ≤ 65 dB
 Input power:400VA
 Pump structure:Diaphragm type



Electric Suction Unit

SUM-40

Suction rate: > 40 L/min
 Range of negative pressure:0.013~0.09MPa
 Noise level: < 60 dB
 Input power: 400VA
 Suction bottle:2000mlx2 (plastic bottle)
 Pump structure:Diaphragm type



CPAP
CPAP-01

25ST
 Pressure range:4-25hpa
 Humidification:0-5
 Auto Altitude Compensation
 Auto Leak Compensation
 Noise <30dB
 Dimensions:140mm*156mm*94mm (without humidifier)



CPAP
CPAP-02

Ventilation mode and functions
 S/T TS CPAP AUTO AVAPSComfort function
 Suitable suitable for adult patients with obstructive sleep apneasyndrome (OSA)
 High performance fans
 Optional external low-pressure oxygen



Infant Resuscitator
IR-3000

With built-in air oxygen blender,the flow rate and oxygen concentration can be set without connecting toan external blender or a flow meter
 Infant Resuscitator saves space and time frompreparation with its innovative and compact design
 Flow Rate:0 L/min to 15 L/min
 FiO2: 21%~100%
 Gas Source:0.3~0.4 MPa (3 ~4 bar)
 Alarm Activation:Audible alarm when gas pressuredifference>0.1 MPa (1 bar)
 Accuracy of FiO2: ±3%



Bubble CPAP
NCPAP-AD1

Applicable Patients: Premature neonates and infants up to 14 years old
 FiO2: 21%-100%
 Flow Rate: 2-18 LPM
 CPAP Pressure: 3-10 cmH2O
 Noise: <55dB(A)
 Power: AC220V,50-60Hz(Optional: AC110V, 50-60Hz)
 Gas Source: Air / Oxygen @ 0.3 MPa -0.4 MPa
 Alarm: Gas supply pressure difference >0.1 MPa
 Humidifier: Standard:PN-2000F Optional:PN-2000FB, PN-2000FC850



Oxygen Cylinder

EK-OC10

- 10L



Oxygen Cylinder

EK-OC12

- 12L



Oxygen Cylinder

EK-OC15

- 15L



Cylinder Trolley

CT-102

- 102*76*43 cm



Silicon Manual Insufflator

SIN-01

- This product can be used up to 20 times repeatedly in an autoclave at 134°C (except oxygen tubes and air bags)
- This product has a limited pressure valve to ensure the safe gas pressure supplied to the patient
- Flow rate: 0-15lpm
- The end of the patient connector is a standard diameter of 22/15mm
- The material of all parts is latex-free



Flow Meter

FLM-01

- Flow rate: 0-15lpm
- Bottle: 250ml



Blood Pressure Monitor

BP-AB814

Dimension: 94*122*72 mm, display size: 87*85.4mm
 User: 2
 Memory: 90/per user
 Measurement method: Oscillometric
 Display: LED
 Measurement range (pressure): 0-280 mmHg
 Measurement range (pulse): 40-180 beats/min
 Accuracy (pressure): ± 3 mmHg, Accuracy (pulse): $\pm 5\%$



Blood Pressure Monitor

BP-AB808

Dimension: 134*101*64 mm, display size: 60.3*50.3mm
 User: 2
 Memory: 90/per user
 Measurement method: Oscillometric
 Display: LCD
 Measurement range (pressure): 0-280 mmHg
 Measurement range (pulse): 40-180 beats/min
 Accuracy (pressure): ± 3 mmHg, Accuracy (pulse): $\pm 5\%$



Blood Pressure Monitor

BP-CW01

Response time: about 60 seconds
 Memory: 2*90 memories
 Display model: digital LCD
 LCD size: 42*40mm (L*W)
 Pressure range: 0 to 280 mmHg
 Pulse range: 40 to 199 beats/minute
 Accuracy: pressure: ± 3 mmhg, pulse: $+ 5\%$ (± 0.4 KPa)



Blood Pressure Monitor

BP-CB01

Model: CK-A136
 Display: LED digital display
 Measuring range blood pressure: (0-280)mmHg
 Measuring range pulse: (40-199)times/min
 Accuracy blood pressure: ± 3 mmHg
 Accuracy pulse: within $\pm 5\%$ of the measured data
 Memory capacity: double 90 sets of measurement data
 Compression: full automatic pressurization mode
 Decompression: full automatic decompression mode
 Exhaust: full automatic rapid exhaust mode



Blood Pressure Monitor

BP-CW02

Display: LED digital display
 Measuring range blood pressure: (0-280)mmHg
 Measuring range pulse: (40-199)times/min
 Accuracy blood pressure: ± 3 mmHg
 Accuracy pulse: within $\pm 5\%$ of the measured data
 Memory capacity: double 90 sets of measurement data
 Compression: full automatic pressurization mode
 Decompression: full automatic decompression mode
 Exhaust: full automatic rapid exhaust mode



Blood Pressure Monitor**BP-CB03**

Measurement Method : Oscilloscopic measurement
 Measurement Range Blood pressure:(0-280)mmHg
 Measurement Range Pulse Rate:(40-199)times/minutes
 Accuracy Blood pressure:within±3mmHg
 Accuracy Pulse rate value:±5%of measured data
 Pressurization: Full automatic pressurization mode
 Decompression: Full automatic decompression mode
 Air Discharging: Full automatic air rapid exhaust mode
 Forced induction: Semiconductor pressure sensor
 Power: DC 3.7V type B

**Blood Pressure Monitor****BP-CB02**

Model: CK-A136
 Display: LED digital display
 Measuring range Blood pressure: (0-280)mmHg
 Measuring range Pulse: (40-199)times/min
 Accuracy Blood pressure: ±3mmHg
 Accuracy Pulse: within±5%of the measured data
 Memory Capacity: double 90 sets of measurement data
 Compression: Full automatic pressurization mode
 Decompression: Full automatic decompression mode
 Exhaust: Full automatic rapid exhaust mode
 Pressure induction: Semiconductor pressure sensor
 Power supply: Lithium battery3.7V,type-BF
 Operation temperature and humidity: +5°C~+40°C, 15%~90%R.H,70kPa~106kPa
 Transport and storage conditions: -20°C~+50°C, 15%~90%R.H,70kPa~106kPa
 Host weight: 240g or so
 Measuring range of arm: The armcircumferenceis220-320mm or so
 Host size: 121mmx98mmx60mm

**Blood Pressure Monitor****Ultrasonic Height and Weight Scale****WS-BY08**

Height measuring function/height measuring function BMI/Voice function.
 Review function
 RS232 port connect to the computer
 With thermal printer,print the result
 Material: ABS Plastic+ AluminumBlack backlit LCD display size: 70*80mm
 Height measuring range: 0.30-2.00 m(division of height :5mm)
 Weight measuring range: 3kg-200kg
 Power: 6V 2ADC power
 Feature: Automatic on-step,continuous weighingLow battery/over-load indication /Auto-zero



Nebulizer**NB-F10**

220v 50hz EU plug
 Liter Flow Range: > 6.7lpm
 Maximum nebulization rate $\geq 0.25\text{mL}/\text{min}$
 Sound level: $\leq 65\text{dB(A)}$
 Particle size: $0.5\text{-}10\mu\text{m}$
 MMAD $\leq 5\mu\text{m}$

**Nebulizer****NB-F20**

220v 50hz EU plug
 Liter Flow Range: > 6.7lpm
 Maximum nebulization rate $\geq 0.25\text{mL}/\text{min}$
 Sound level: $\leq 65\text{dB(A)}$
 Particle size: $0.5\text{-}10\mu\text{m}$
 MMAD $\leq 5\mu\text{m}$

**Nebulizer****NB-F30**

220v 50hz EU plug
 Liter flow range: > 6.7lpm
 Maximum nebulization rate $\geq 0.25\text{mL}/\text{min}$
 Sound level: $\leq 65\text{dB(A)}$
 Particle size: $0.5\text{-}10\mu\text{m}$
 MMAD $\leq 5\mu\text{m}$

**Nebulizer****BF-40**

Microporous atomization technology
 Atomization frequency: $110\text{KHz} \pm 10\text{KHz}$
 Low battery indication
 Cup Capacity: 10mL
 Liquid shortage indication
 Atomization rate $\geq 0.2\text{mL}/\text{min}$ Operate with AA battery or
 Particle Size $\leq 5\mu\text{m}$
 Type C cable
 Working Noise Level $\leq 50\text{dB}$

**Fetal Doppler****FD-F01**

Display: 1.77 inch TFT
 Probe frequency: $2.5\text{MHz} \pm 10\%$
 Fetal heart rate range: 50bpm ~ 240bpm
 Resolution: 1bpm
 Accuracy: $\pm 2\text{bpm}$
 Power consumption: $< 0.8\text{W}$
 Battery type: 2 * 1.5V AA batteries



Pulse Oximeter**PO-C101**

Dimension: 60mm×35mm×37mm
 Weight: including 2 AAA alkaline batteries
 Outer box: 65mm×45mm×90mm
 Anti-electronic shock type: internally powered equipment
 Anti-electronic shock degree: type BF equipment
 Mode of operation: continuous operation enclosure degree of ingress
 Protection: IPX4
 Power consumption: Smaller than 30mA(normal)
 Operating temperature: 5°C~40°C
 Storage temperature: -10°C~50°C
 Relative humidity: 15%~80% non-condensing
 Hemoglobin saturation display: 35%~100%

**Pulse Oximeter****PO-C102**

Dimension: 60mm×35mm×37mm
 Weight: (including 2 AAA alkaline batteries) Outer box:65mm×45mm×90mm
 Anti-electronic shock type: internally powered equipment
 Anti-electronic shock degree: type BF equipment
 EMC: type B class I
 Mode of operation: continuous operation enclosure degree of ingress/
 Protection: IPX4
 Power consumption: smaller than 30mA(normal)
 Operating temperature: 5°C~40°C
 Storage temperature: -10°C~50°C

**Pulse Oximeter****PO-C103**

Dimension: 60mm×35mm×37mm
 Weight: (including 2 AAA alkaline batteries)
 Outer box: 65mm×45mm×90mm
 Anti-electronic shock type: internally powered equipment
 Anti-electronic shock degree: type BF equipment
 Power consumption: Smaller than 30mA(normal)
 Operating temperature: 5°C~40°C
 Storage temperature: -10°C~50°C
 Relative humidity: 15%~80%non-condensing

**Thermometer****C1502**

Measuring method: Non-contact
 Measuring distance: 3cm~5cm
 Measuring range: 32°C~42.5°C(89.6°F~108.5°F)
 Display resolution: 0.1°C
 Adjusted mode: body mode
 Direct mode: surface mode
 Measuring site: forehead
 Reference site: armpit
 Power supply: DC3V(2 of AAA alkaline batteries)
 Power tip: low battery
 Backlight: high brightness backlight
 Display unit: celsius or fahrenheit degree
 Automatic shutdown: 15Secs
 Size: 165mm*40mm*40mm
 Weight : about 67g(without batteries)



Breast Pump**C375**

Product name: wearable electric breast pump
 Product model: MY-375
 Charging voltage: DC5V=1A
 Charging current: 650mA
 Battery type: polymer battery
 Battery capacity: 1100mAh
 Rated voltage: 5V
 Rated current: 0.6A Max
 Working hours: >1.5H
 Noise limit: ≤60dB
 Extraction intensity limit: 40mmHg-300mmHg
 Working environment: 10-30°C,RH15%-93%,700-1060hPa
 Storage and transportation environment: -25-50°C,RH15%-93%,700-1060hPa

**Breast Pump****C376**

Product model: MY-376
 Charging voltage: DC5V=1A
 Charging current: 650mA
 Battery type: polymer battery
 Battery capacity: 800mAh
 Rated voltage: 5V
 Rated current: 0.6A Max
 Working hours: >1.5H
 Noise limit: 40mmHg-300mmHg
 Extraction intensity limit: ≤60dB
 Working environment: 10-30°C,RH15%-93%,700-1060hPa
 Storage and transportation environment: -25-50°C,RH15%-93%,700-1061hPa

**Glucometer****GCM-01**

No coding
 1.7-inch large screen
 256 data storage memory
 7 days.14 days.28 days average
 GDH enzyme test strip
 0.8uL blood sample
 The range of HCT test can reach 20 ~ 70% of the red cell pressure of whole venous blood

**Glucometer****GCM-02**

Real-time Data Transmission Frequency:
 Continuously sends data to the application, updating blood glucose data every 3minutes.
 Data Storage Duration:
 Can store data for 15 days.* If the device is disconnected for 14 days, data from the 15th day can still be received.Dust and Water Resistance Rating
 Rating: IP57
 Suitability: Suitable for swimming
 Applicable Age: Suitable for Age over 8 years old



Baby Scale

BS-01

Flip size: 700 * 319 * 42.5mm
Weighing pan scale: 60cm
Accuracy: 2g
Weighing range: 40g-30kg
Error: plus or minus 10g
Unit: g kg LB ST: LB
Power supply mode: battery (3 x 7) charging model (Android data cable)
Optional display: LCD white letter display
Self-weight: 1.6kg



Baby Scale

BS-02

WIGHING RANGE: 0.1kg-20kg
Single size: 54.8*32*5.5cm
UNIT CONVERSION: kg / lb/ st
DISPLAY MODE: LCD display
POWER SUPPLY MODE: 2 x 1.5V AAABATTERIES
SENSOR: HIGH PRECISIONSENSOR
PACKING QUANTITY: 5 UNITS/BOX



Weight Scale

WS-10

20PCS/Carton
Colour: Black
Size of Scale: 260*260mm*R20
Color boxsize: 58*28*28cm
Glass thickness: 4mm/5mm/6m
G.w.: 14kg
N.W: 13kg
Specifications: 180kg/0.1kg



Weight Scale

WS-20

10PCS/Carton
Colour: white
Size of Scale: 300* 300*27mm R3
Color box size: 44*32*33cm
Glass thickness: 4mm/5mm/6m
G.W: 22.5kg
N.W: 21kg
Specifications: 180kg/0.1kg



Laryngoscope

LAR-003

Be made of 304 surgical stainless steel
 Light weight improves balance and maneuverability for even the difficult intubation
 Lamp provides defused illumination minus shadows.
 Available with curved Macintosh and Straight Miller
 Compatible with all conventional laryngoscope system
 Available with replacement lamp



Video Laryngoscope

LAR-V06

3.2 inch Touchable screen,
 Rechargeable lithium battery
 Anti-fog lens with power on used
 Omnidirectional rotation screen design for better sight
 One button operation for image, recording and review
 Automatic coverage of full record Low battery alarm notice



Disposable Video Laryngoscope

LAR-V07

3.2" Touchable screen
 Battery working time: >6.5 hrs
 Rechargeable lithium battery
 One Machine + 1*Mac Holder/1*Mil Holder (pick one of two)
 Accessories: MIL00, MIL0, MAC1, MAC2, MAC3, MAC4 Disposable blade
 (Each size 1pcs)



Video Lighted Intubation Stylet

LAR-S1

3.2" Touchable screen
 Malleable Stylet
 Total 6*ring of LED lights
 Medical Grade Alloy
 Difficult Visualization
 Display: 3.2" Touchable screen
 Resolution Ratio: 800*480
 Viewing Angle: ≥60°
 Power: <2W
 Display rotation angle (Vertical, horizontal): 0~150°, 0~270°
 Rechargeable lithium battery



Flexible Video Laryngoscope

LAR-F33

4.5 inches screen
 Insertion Tube Material: TPU braided tube,
 Shell: PPSU;
 Resolution: 160000;
 Illumination: >10000LX;
 Color Temperature: > 5000K
 Quick Handlings: 1 lock design Fast installation and disassembling.
 Adjust Brightness: There are 4 gears for adjustment.
 Rotary Adjustment: Rotation can be adjusted by 90° left and right



Eye / ENT Diagnostic Set

DS-100

Ophthalmoscope
 Oscope Carrier
 Ear Speculum (Φ3/Φ4/Φ5/Φ6)
 Nasal Speculum (Φ8)
 Nose Dilator
 Laryngeal Mirror Stem
 Laryngeal Mirror (Φ15/Φ18/Φ21)
 Plastic Tongue Depressor
 Battery Handle
 Spare Bulbs*4 (2 Large and 2 Small 2.5v/0.3A)



Examination Set

EK-105

Material: Metal, Plastic
 Type: Diagnose
 Product Name: otoscope
 Equivalent input noise(dB): ≤32
 Product Size/ Package Size:
 20*15*18mm/ 80*80*35mm
 Frequency influence range(Hz): 200Hz~7645Hz



Diagnostic Audiometer

AD104

Channels: Two independent output channels
 Frequency: Air conduction 125Hz~8000Hz, Bone Conduction 250Hz~6000Hz,
 The allowable error +2%.
 Test intensity range: Air conduction -10~120dB, Bone Conduction -10~70dB
 Masking intensity range: -10~110dB
 Test Signal: Pulse, Warble tone, Narrow band noise, Pure tone,
 Display screen: LCD display,
 Precisen medical display



Otoscope

OTO-10

Outstanding optics
 Features a pin contact fitting otoscope head, three sizes reusable specula and swivel magnifying lens
 Includes a spare 25v halogen lamp
 Requires two 'c batteries (not included)
 Hard plastic case packing for safe storage



Stethoscope

ST-119

Ear tips: PVC soft ear tips (Kindcare patented ear tips)
 Binaural: stainless steel with chromed finishes
 Y-tube: PVC Y-tubing length: around 55.8cm
 Total length of the product: around 71cm
 Chest piece: stainless steel chestpiece
 Head 0: 44 mm
 Accessory box: with 4 additional ear tips and one membrane
 Cardboard box with foam inside



Slit Lamp Microscope

YZ-5G

Microscope Type:Galilean Stereoscopic Microscope
 Objective Magnification:Five-step Drum Magnification
 Eye Piece:12.5x
 Magnifications (Field of view):
 6.3x(33mm)10x(22.5mm)16x(14mm)25x(8.8mm)40x(5.5mm)
 Pupil Distance: 55mm~75mm
 Diopter Adjustment: -5D~+3D
 Slit Width: 0mm~14mm adjustable(slit is round when the slit width is 14mm)
 Slit Height:1mm ~ 14mm adjustable
 Slit Angle:0°~180° adjustable
 Slit Inclination:5°, 10°, 15°, 20°four steps
 Filters:Heat Absorption, Grey, Redfree, Cobalt blue



Indirect Ophthalmoscope

YZ-25C

Angle of View:45°+5
 Pupil Distance:52mm~74mm
 Weight:700g
 Adjustable Range of the Head Frame:520mm~640mm
 Depth:85mm~125mm
 Illumination Source:LED
 Power Supply:Lit battery pack DC:7.4V Rechargeable



Retinoscope

YZ-24B

Working Distance:0.67m
 Streak width:3mm -20mm
 Illumination Source:3.5V/2.8W Halogen Bulb
 Streak Rotation:360.
 Power Supply: AC100Vto 250V, 50Hz/60HZ
 Power (Main Body of Ophthalmoscope):Li+ battery pack DC:3.7V



Ophthalmoscope

YZ-30R

Aesthetically pleasing design.
 The power supply is ordinary dry battery or rechargeable battery, which is convenient to carry.



Operation Microscope

OM-10P

Eyepiece: 10X/12.5X Alf wide-angle eyepiece
 Observe the slope: 45°
 Pupil distance: 55mm -76mm, continuously adjustablee
 Diopter adjustment: ±7D (binocular)
 Magnification: 4X -20X manual continuous non-polar doubling
 Vision: 10.5 mm - 60 mm
 Working distance:>180mm
 1:8 large variable ratio



Auto Lensmeter

LM-260

Adjustable high-definition touch LCD display.
 High-end craftsmanship, precision assembly. Modern, simple and high-end appearance.
 Quick and automatic identification of progressive multifocal lenses.
 Eco-Friendly LED light source, no need for ABBE value compensation.
 Optimized and upgraded Hartmann multi-point measurement technology.
 PD, PH, UV measurement



Ophthalmic Combined Table

OCO-303

Combined size: 960*1000*1600mm
 Table size: 980*490mm
 Drawer size: 560*360*80
 Chair up/down range: 160mm
 Arm up/down range: 180mm
 Arm rotate angle: 90°
 Table rotate angle: 90°



Full Auto Refracto-Keratometer

ARK-01

Automatic tracking and measurement of human eyes
 The screen can rotate up, down, left and right freely
 Electric lifting throat mold
 High-speed printer, automatic paper cutting
 The measurement range of vertex power is -20D~+20D
 The measurement range of cylinder diopter (absolute value) is -6D~+6D
 The measuring range of cylindrical axial is 0°~180°
 Corneal diameter: 1.0~12.00 mm
 Pupil distance: 10-85mm
 Minimum pupil diameter: 1.0mm
 Measurement completion time: < 0.5 seconds



Full Automatic Refractometer

AR-01

Full Automatic Pupil Tracement, automatic switching of R/L eyes
 10.4 TFT capacitive touch screen, 180° Flip up and down, rotate left and right
 Built-in thermal printer with automatic paper cutting
 Measurement of refractive adjustment
 IOL, PD measurement
 Support WiFi and Bluetooth data transmission (optional) *Support VGA external screen (optional)
 Fast measurement speed: ≤ 0.5s
 Stable measurement repeatability



Semi Auto Refractometer

ARK-02

7" color TFT LCD touch screen
 Auto fog chart
 Quick measurement for diopter of MIN. pupil size
 Auto PO measurement
 Tilting screen



Applanation Tonometer

AT-21B

Measurement under a slit lamp microscope, both for eye examination and IOP measurement.

The measurement data is accurate, the error of the IOP meter itself does not exceed 0.066kPa (0.5mmHg).

The IOP value can be obtained directly without the need to check the table or have other conversion procedures, and $P_t = "P"$, i.e. $\lg P_t - \lg P_0 = 0.56k$, normal $k = 0.021$; so $P_t : P_0 = 1.0281$, so P_t increases by 2.8% compared to P_0 .



Rebound Tonometer

TN-500

Measure Range: 3mmHg~70mmHg

Precision: +1.5mmHg(3mmHg<IOP<25mmHg);

+2.5mmHg(25mmHg<IOP<70mmHg);

Measurement Mode: Both vertical and horizontal measurement

Output: Wireless Infrared Thermal printer

Small size, Easy to carry

No need Anesthesia,

No Discomfortableness



Full Auto Non-contact Tonometer

TN-S100

Dual sensor system with optic and air blow integrated to provide most precise and reliable IOP result within industry

Patent air blow system with softly blow to improve patient comfortability

Simply one touch to bring out all tests and results done in both eyes

in 30 seconds with fully automatic mode, manual operation is also optional

Easy to use with touch screen and friendly software interface

State of the art design for space saving and small examination room

IOP correction automatically by corneal thickness (only in NCT-100A)

Data output and transform by USB 2.0 port



A/B Ultrasound Scanner

ABS-200

Built-in Workstation

Detailed Resolution, Color TFT Display, Multiple Display and Continuous Zoom

Turn-up Keyboard, Fully Portable

Real Time Images, Cine-Loop

User and Patient Information Entry, Clinical Reports With Images Print Out

Document Management, Search and Statistic

Trackball for Easy Measurement and Operation

Custom Velocity Settings



A/B Ultrasound Scanner

ABS-300

Abundant data storage

Built-in 16GB D disk can store data, images and reports

●USB Support U disk, software upgrade and one-key storage

DICOM3.0 Network port makes data transmission easily

The system comes with simple, practical, easy-to-work software to print and manage data

Report-print, screen copy, IOL report, case reports with images



Blood Collection

Tube



Disposable Infusion



Combi Stopper



Syringe Accessories



Injection Needle



Disposable Insulin Syringe



Oral Dosing Syringe



Scalp Vein Set



Spinal Needle



Prefilled Syringes



Pre-Filled Flush Syringe



Blood Bag PVC



Blood Transfusion Set



Light-Proof Syringe



Scalp Vein Set



Pen-Type Blood Collection



Pediatric Infusion Set With Burette

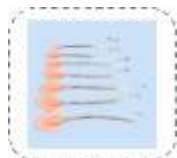
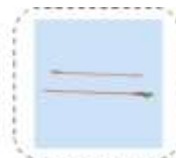


Indwelling Needle



Mirco Blood Collection Tube



**First Aid Kit
Waterproof****Tourniquet****Car First Aid Kit****Doll First Aid Kit****First Aid****Security Vests****First Aid Rope****First Aid Kit(SOS)****Airway Tubes****Oxygen Face Mask****Guedel Airway****Colostomy Bag****Laryngeal Mask
Airway****Urine Bag****Foley Catheter****Double Chamber****Three Chambers****Three-Chamber
Double Capsule****Double Lumen Elbow
Latex Catheter**

Crepe Bandage



Emergency Bandage



Adhesive Bandage



Orthopaedic Padding



Tubular Bandage



POP Bandage



Gauze Bandage



Elastic Bandage



Orthopedic Casting Tape



Adhesive Bandage



Zigzag Cotton Wool



Cotton Pad



Oval Cotton Pad



Suare Cotton Pad



Round Cotton Pad



Cotton Tip Applicators



Cotton Ball



Cotton Wool



Dental Cotton Roll



PE Tape



PU fixing roll



Silk Tape



PU Transparent Patch



Zinc Oxide Plaster



No Adhesive Eye Pad



Non Woven IV Dressing



Dressing Roll



Non-Woven Tape



Adhesive Wound Dressing



Non Woven Fixing Roll



Sports Tape



Hydrocolloid Wound Dressing



Zinc Oxide Adhesive Tape



Cooling Patch



Porous Capsicum Plaster



Adhesive Eye Pad



PBT Bandage**Zig-Zag Gauze****Triangular Bandage****Jumbo Gauze Roll****Vaseline Gauze****Fluffy Bandage****Gauze Ball****Lap Sponge****Gauze Swab****Disinfecting Gauze Swab****Pillow Gauze Roll****Four folded Gauze Roll****Gauze Bandage****Cutting Gauze****Zinc Oxide Tinplate Tape****Transparent IV Dressing**

Urine Pad



Surgical Gown



Face Mask



Fleece



Alcohol Tablets



Isolation Gown



Strip Cap



Non-Woven Fabric



Shoe Covers



Nitrile Gloves



PVC Gloves



Surgical Gloves

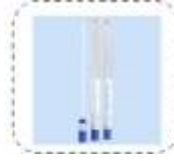


Latex Gloves



Exam Gloves



Wooden Tongue**Stainless Steel Tweezer****Petri Dishes****Flat Reel Sterile Roll****Micro Blood Collection Tube****Urine Container****Capillary Blood Collection****Cover Glass****Sterilization Indicator Tape****Test Tubes****Sterile Swab Stick****Pipette Tips****Microscope Slides****Measuring Cup****Sharp Container****Surgical Sutures****Surgical Blades****Acrylic Test Tube Racks****Bacterial Cell Spreader****Centrifuge Tube Racks**

Freezer Racks**Cryogenic Storage Boxes-PP****Cryogenic Tube****Cardboard Freezer Boxes****Cryogenic Gloves****Centrifuge Tube Racks****Stainless Steel Test Tube****Pipette Stand****Acrylic Test Tube Racks****Centrifuge Tube Racks****Pipette Stand****Transfer Pipette Stand****Blood Clot Plate****Pipette Tip****Stainless Steel Cleaning Basket****Slide Staining Rack****Petri Dish Sterilize Container****Stainless Steel Alcohol Lamp**



Thank You!



Our Contact:



+27 67 826 9385



sales@matriarchclinical.tech
matriarchclinical@gmail.com



97 ANDERSON STREET
CENTRAL BUSINESS DISTRICT
KLERKSDORP
NORTH WEST
2571